

The Petra Side Table features a round marble table top and three solid bronze legs, sand-cast from hand-formed molds. The bulbous, sculptural legs are inspired by the strong and elegant hind legs of a camel.



Petra Side Table

Dimensions

overall - 21.75"D x 19.25"H

marble top - 20"D x 17"H

Custom marble dimensions available

Materials

*polished bronze and marble

Marble

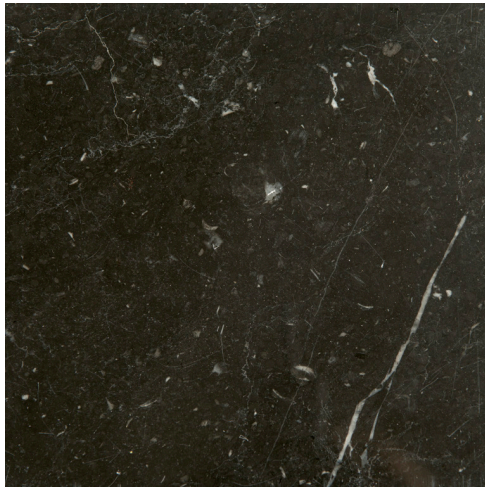
nero marquita, sahara noir, carrara, calacutta or statuary

Lead time

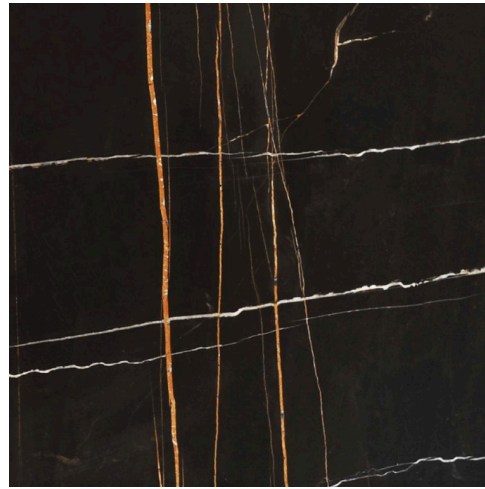
8-12 weeks

*Polished bronze is left unlacquered as a live finish, in order to allow a rich, natural patina to develop over time.

The Petra table legs are made with the age old technique of sand-casting, which can produce pitting and surface variations in the metal. We see these as beauty marks that highlight the unique and hand-made nature of each piece.



Nero Marquina



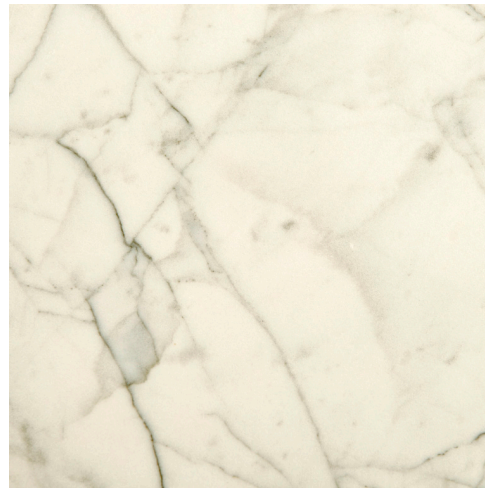
Sahara Noir



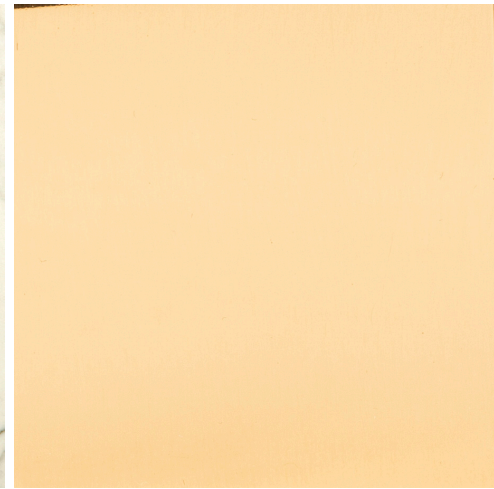
Carrara



Calacutta



Statuary



Polished Bronze