

Part of the Stone Collection, the Sonya Table evokes the soft curves of tumbled stones shaped by the ocean. The table showcases a meticulously hand-sculpted convex bronze or steel base, and a slim wood table top with a sloped, gracefully rounded edge – achieving a striking balance between solidity and lightness. *Made by hand in Pennsylvania.*



Sonya Table

Dimensions

48"-54"D x 30"H

Custom dimensions available

Materials

wood top and bronze or steel base

Finishes

Base

blackened steel or hand-patina bronze

Wood top

ash, bleached ash, white oak, smoked white oak, walnut or ebonized walnut

Lead time

16-18 weeks

Free form and hand-sculpted, each table is slightly unique



Ash



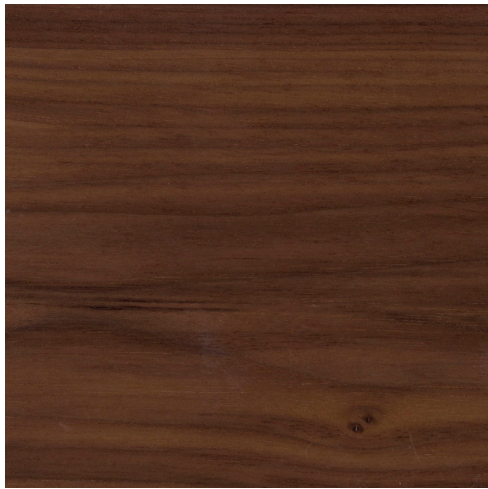
Bleached Ash



Oak



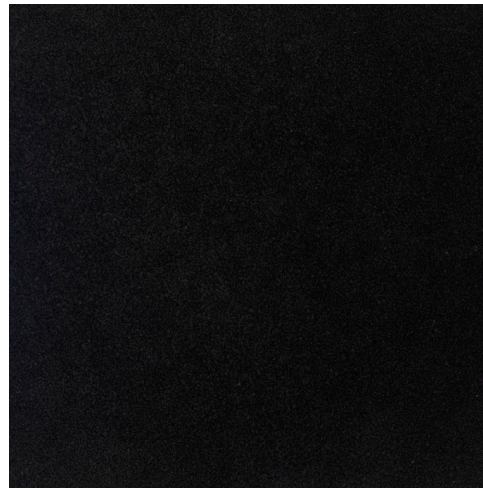
White Oil Oak



Walnut



Ebonized Walnut



Blackened Steel



Hand-Patina Bronze