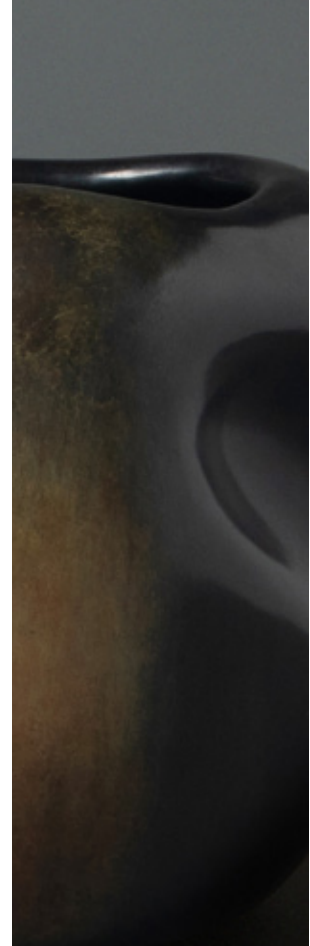




ALEXANDER  
LAMONT



## Anemone Vases

*In rock pools and coral reefs, soft anemones hold onto rocks as the tides rise and fall; opening, closing, moving with the water. The vases suggest this form-changing idea their shapes shifting when viewed from different sides.*

1. FG006156 Low  
Inches Dia 9 in H 6 in  
Centimetres Dia 24.5 cm H 15 cm

2. FG006157 Tall  
Inches Dia 7 3/4 in H 7 3/4 in  
Centimetres Dia 20 cm H 20 cm

Material : Bronze Patina

