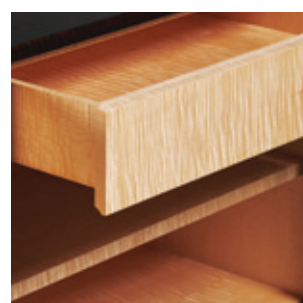
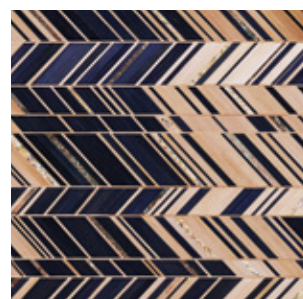
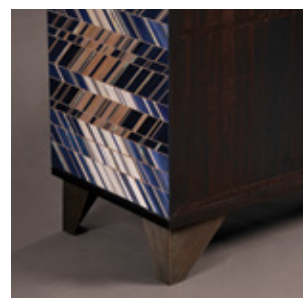




ALEXANDER
LAMONT



Prism Sideboard

FG003677

A serious yet delightful credenza that blends a myriad of materials into a functional and elegant whole. Both light and dark, raw and refined, this piece dazzles gently.

Mother-of-pearl, patinated copper, lustrous indigo and taupe straw marquetry are inlaid by hand over the front and sides of the cabinet. Custom made feet elevate the piece and matching handles give a sensuous tactility to the touch. The top is Smoked Eucalyptus and the interior is Figured Maple with adjustable shelves and generous soft closing drawers.

Inches	W 66 ⁷ / ₈ in	D 20 ¹ / ₂ in	H 32 ⁵ / ₈ in
Centimetres	W 170 cm	D 52 cm	H 83 cm

Materials : Prism Straw, Smoked Eucalyptus, Figured Maple, Bronze Patina
App. weight : 10.5 kgs. / 23 lbs.

