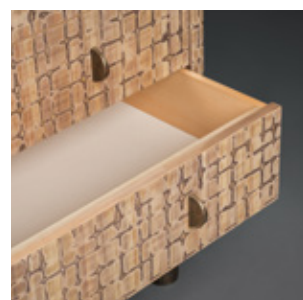
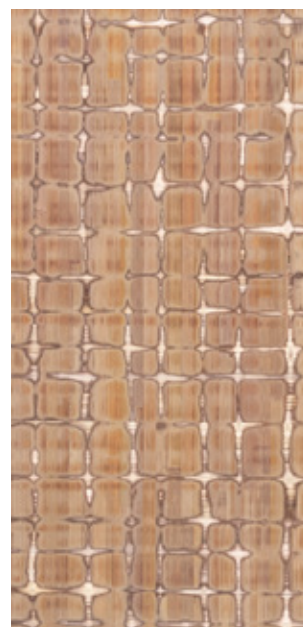




ALEXANDER  
LAMONT



## Hythe Tansu

FG004642

*A dappled, sparkling surface lights up this chest-of-drawers in a new finish created in our studio. Layers of straw create depth and reflection. Drawer handles in warm textured cast brass emerge from the surface. Soft-close Maple drawers are lined with ivory leather. Back in Maple.*

Inches	W 36 in	D 18 $\frac{7}{8}$ in	H 33 $\frac{1}{2}$ in
Centimetres	W 91.5 cm	D 48 cm	H 85 cm

Materials : Burnished Woven Straw, Patinated Brass, Maple, Leather  
App. weight : 90 kgs. / 198.5 lbs.

