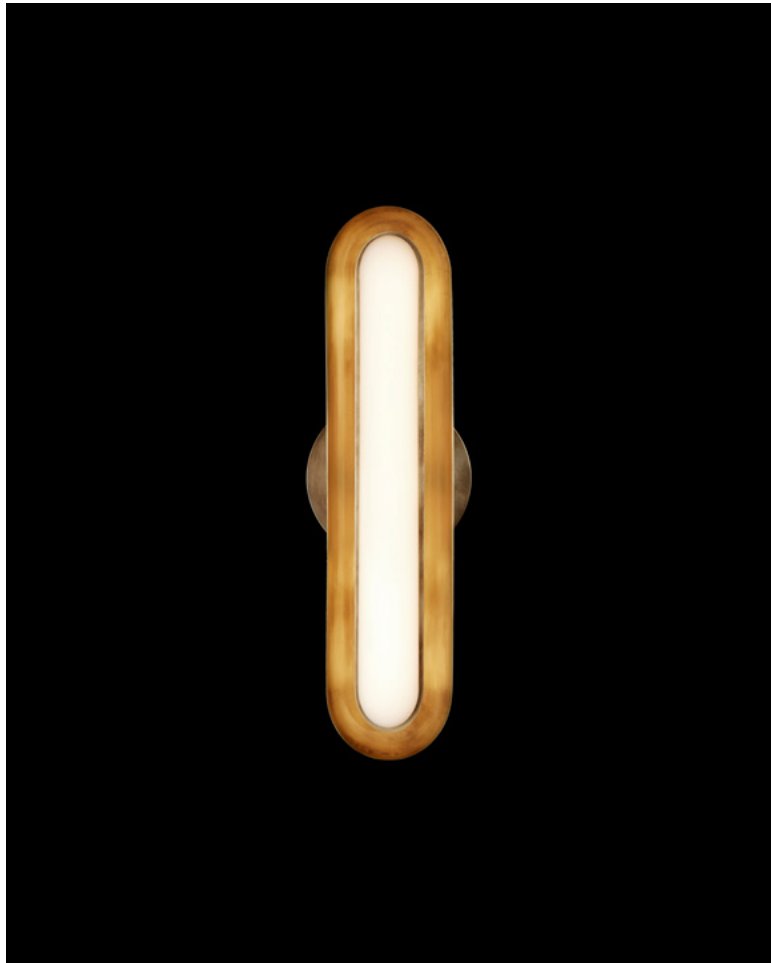


A P P A R A T U S



AGED BRASS

CIRCUIT : 1

REFERENCE

RHYTHM AND SYNCOPATION
HALSTON
AFTERGLOW

COMPOSITION

GLOWING GLASS CAPSULE
BRASS SHADE AND ARMATURE

A P P A R A T U S

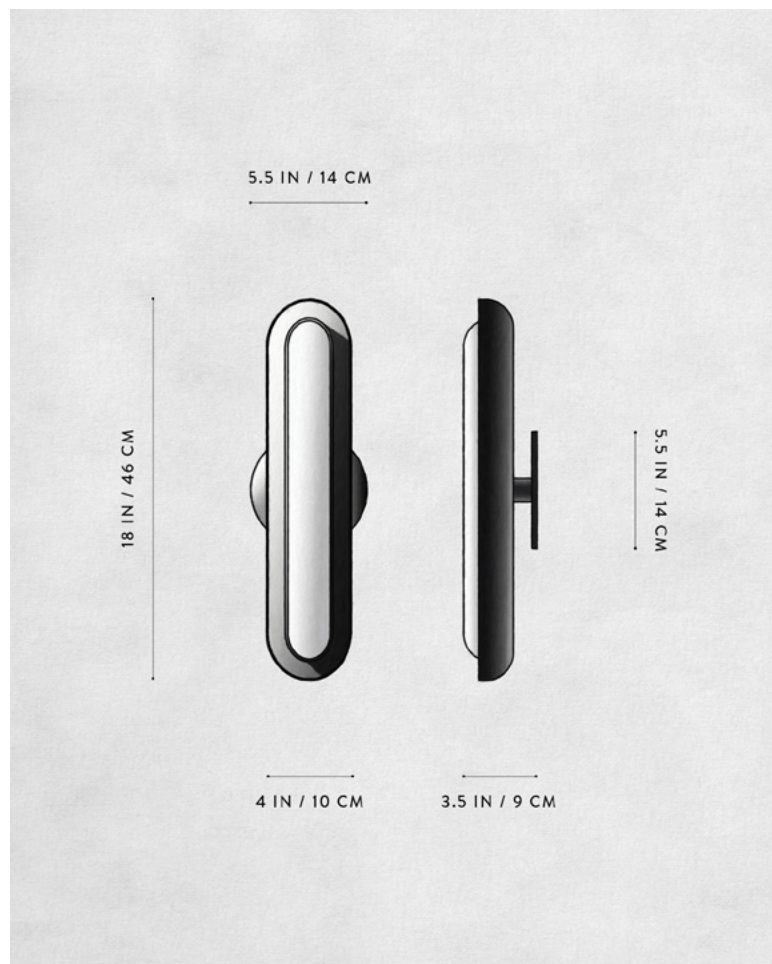


AGED BRASS



AGED BRASS

A P P A R A T U S



DIMENSIONS

WEIGHT

PRICE

VOLTAGE

LAMPING

DRIVER LIFE

DEPOSIT

BALANCE

LEAD TIME

CIRCUIT : 1

18 H, 5.5 W, 3.5 D IN

46 H, 14 W, 9 D CM

APPROX. 5 LBS / 2 KG

FROM \$3300

FROM \$3750 FOR TWO-TONE SHADES

TWO-TONE IS AGED BRASS SHADE INTERIOR
WITH BLACKENED BRASS SHADE EXTERIOR

120-240

UL / CE

16W DIMMABLE LED

1700 LUMENS

2700K

50,000 HOURS

50% UPON ORDER

DUE PRIOR TO SHIPPING

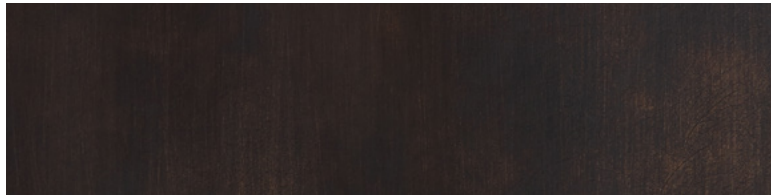
PLEASE REFER TO WEBSITE

FINISHED AND ASSEMBLED BY HAND IN NY
DOMESTIC AND IMPORTED COMPONENTS

A P P A R A T U S



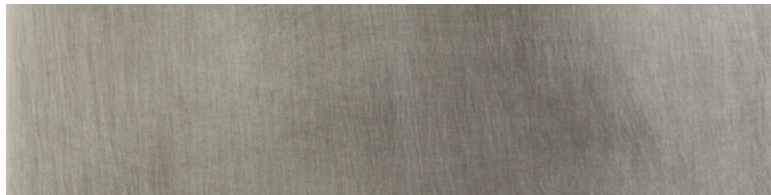
AGED BRASS



OIL-RUBBED BRONZE



BLACKENED BRASS



TARNISHED SILVER

METAL

CIRCUIT

AGED BRASS [WAXED]

OIL-RUBBED BRONZE [WAXED]

BLACKENED BRASS [WAXED]

TARNISHED SILVER [LACQUERED] ADD 35%