

A P P A R A T U S



TWO-TONE

CIRCUIT : 4 VERTICAL

REFERENCE

RHYTHM AND SYNCOPATION
HALSTON
AFTERGLOW

COMPOSITION

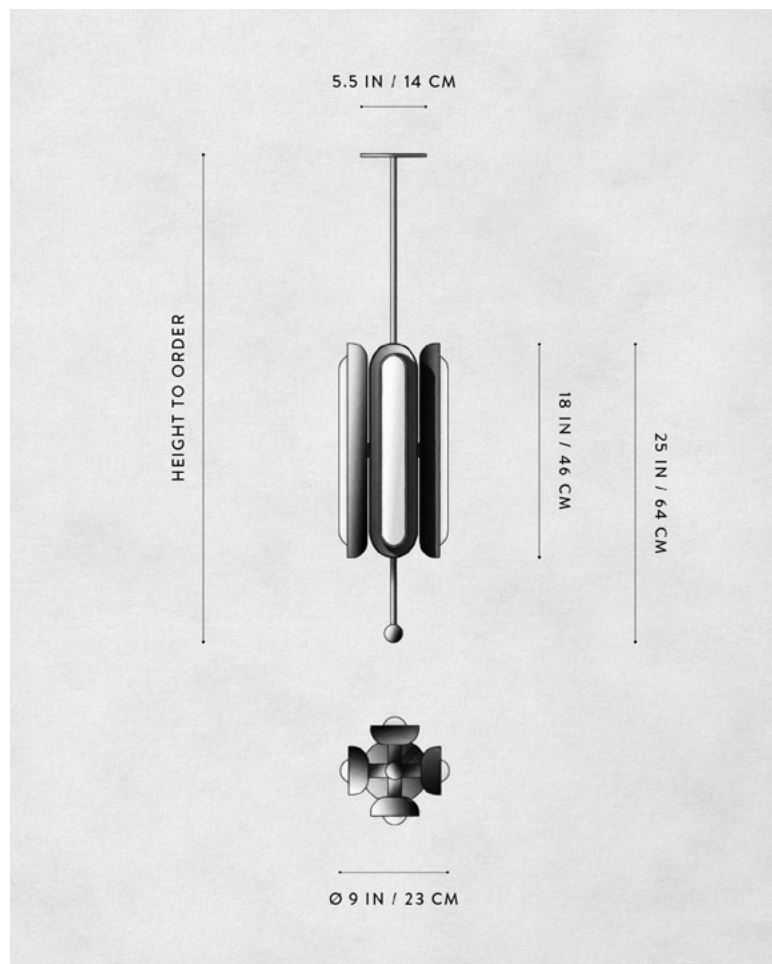
GLOWING GLASS CAPSULE
BRASS SHADE AND ARMATURE

A P P A R A T U S



TWO-TONE

A P P A R A T U S



DIMENSIONS

WEIGHT

PRICE

MINIMUM HEIGHT INCLUDES ADD HEIGHT

VOLTAGE

LAMPING

DRIVER LIFE

DEPOSIT BALANCE LEAD TIME

CIRCUIT : 4 VERTICAL

Ø 9 IN
Ø 23 CM

HEIGHT TO ORDER
APPROX. 30 LBS / 14 KG

FROM \$9800
FROM \$11600 FOR TWO-TONE SHADES
TWO-TONE IS AGED BRASS SHADE INTERIOR
WITH BLACKENED BRASS SHADE EXTERIOR

30 IN
60 IN
\$10 / IN

120-240
UL / CE
4 X 16W DIMMABLE LED
1700 LUMENS EACH
2700K
50,000 HOURS

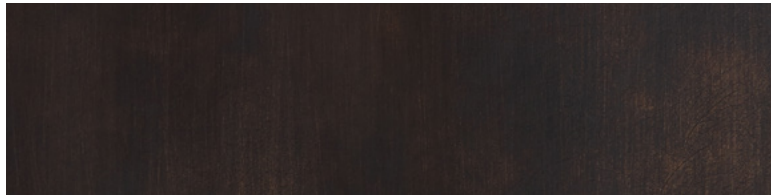
50% UPON ORDER
DUE PRIOR TO SHIPPING
PLEASE REFER TO WEBSITE

FINISHED AND ASSEMBLED BY HAND IN NY
DOMESTIC AND IMPORTED COMPONENTS

A P P A R A T U S



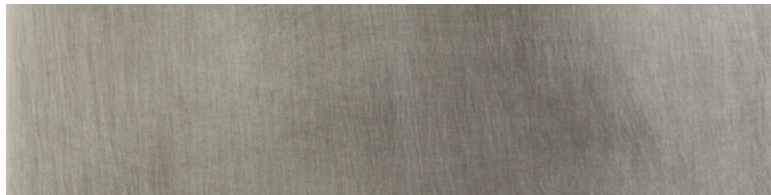
AGED BRASS



OIL-RUBBED BRONZE



BLACKENED BRASS



TARNISHED SILVER

METAL

CIRCUIT

AGED BRASS [WAXED]

OIL-RUBBED BRONZE [WAXED]

BLACKENED BRASS [WAXED]

TARNISHED SILVER [LACQUERED] ADD 35%