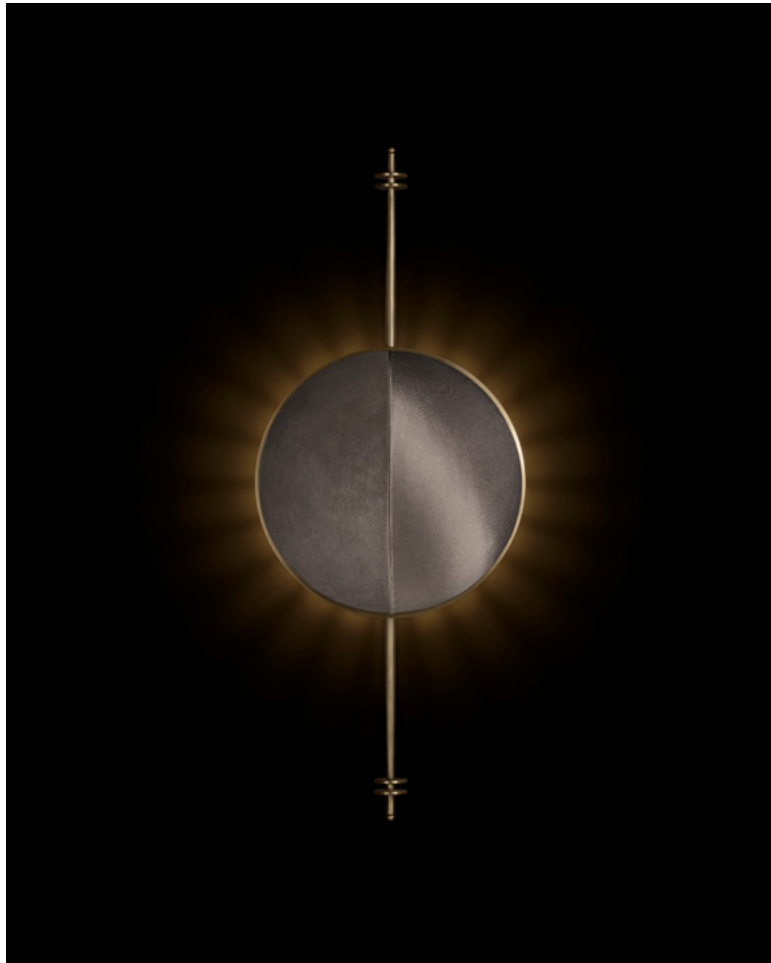


A P P A R A T U S



AGED BRASS / PEWTER SUEDE AND SATIN

STARLET : SCONCE

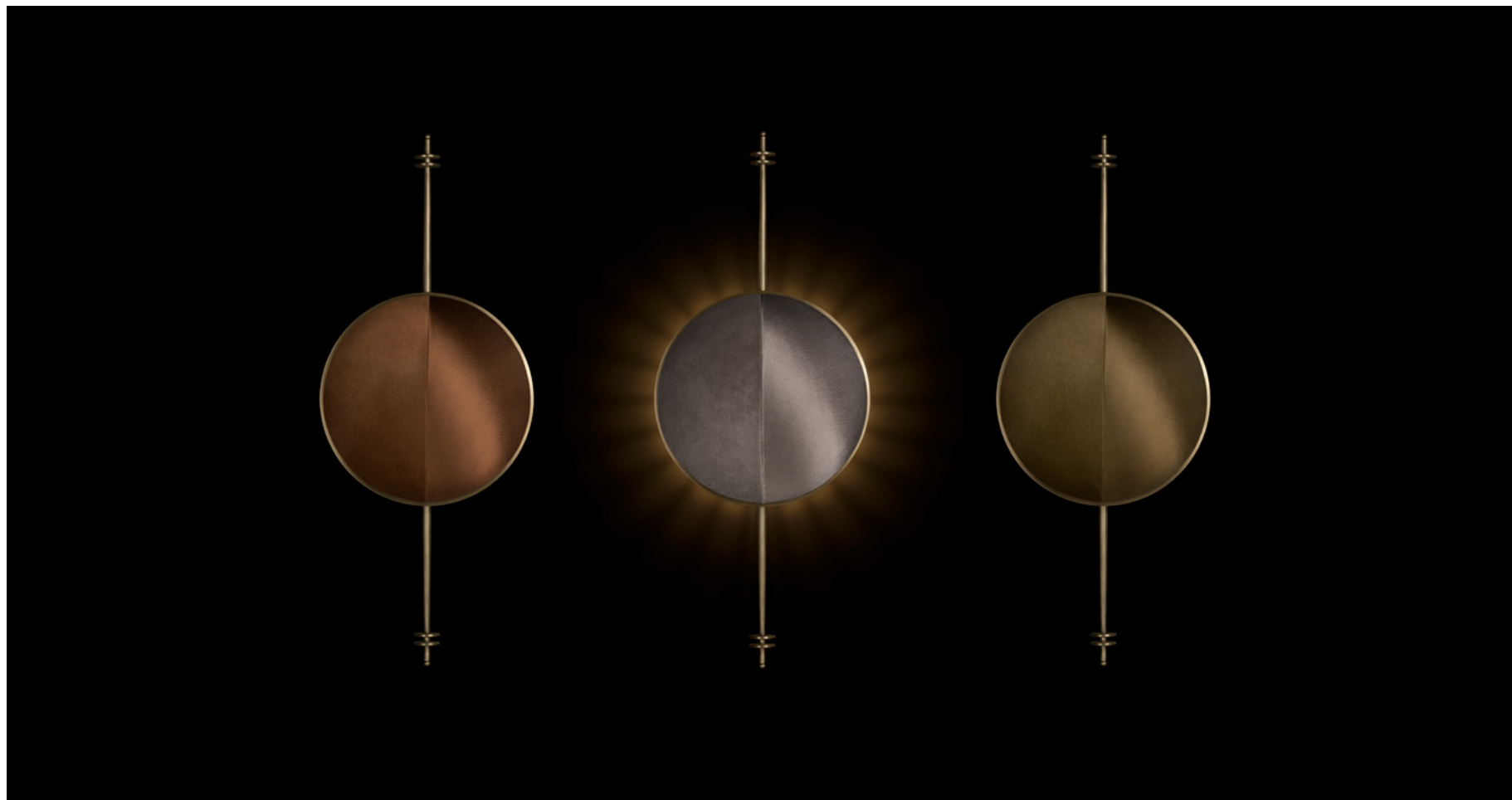
REFERENCE

ANTENNAE
VERDURA 1960

COMPOSITION

BRASS ARMATURE
TONAL SUEDE AND SATIN SHADE

A P P A R A T U S

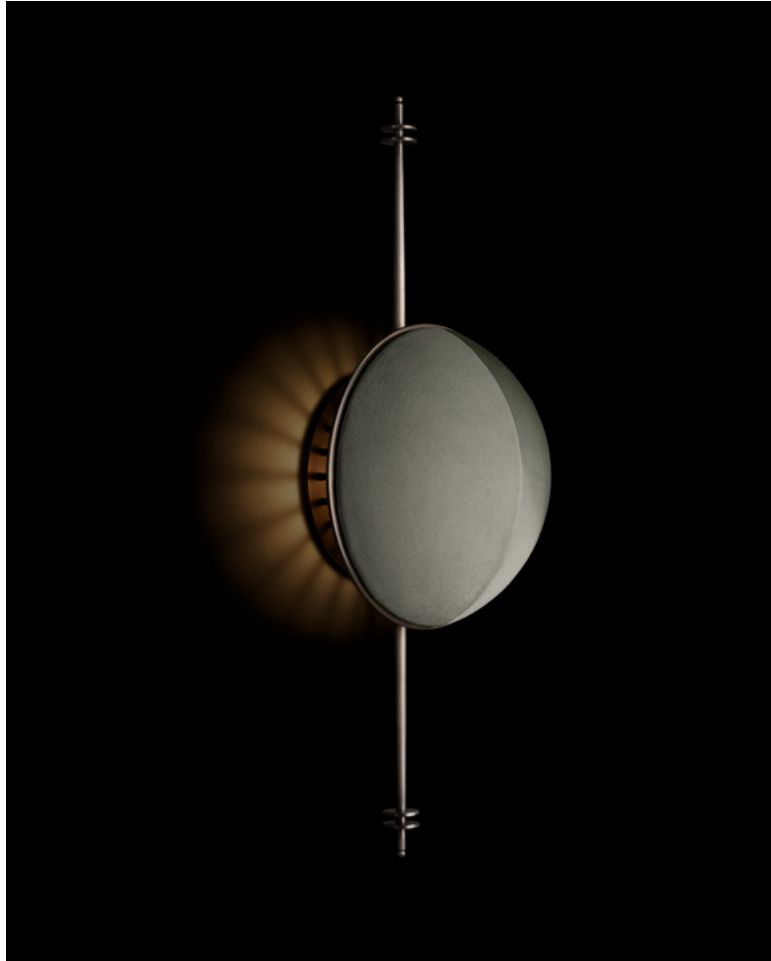


TARNISHED SILVER / SEPIA SUEDE AND SATIN

AGED BRASS / PEWTER SUEDE AND SATIN

AGED BRASS / BRONZE SUEDE AND SATIN

A P P A R A T U S



TARNISHED SILVER / ICE SUEDE AND SATIN



AGED BRASS / SEPIA SUEDE AND SATIN

A P P A R A T U S

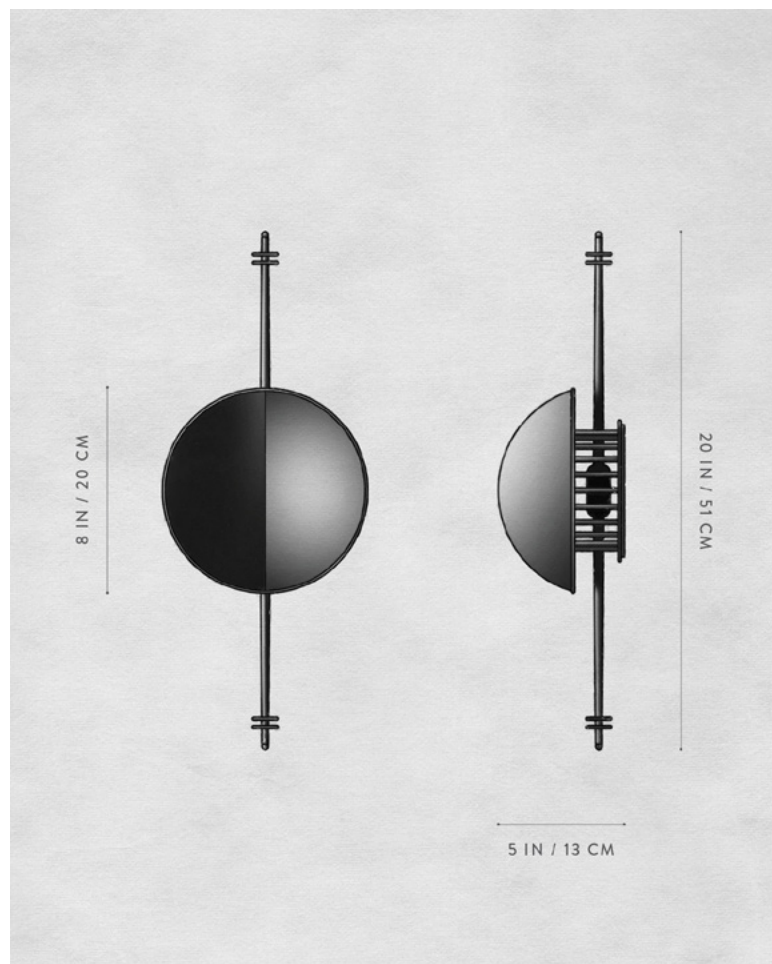


TARNISHED SILVER / JUNIPER SUEDE AND SATIN



TARNISHED SILVER / JUNIPER SUEDE AND SATIN

A P P A R A T U S



STARLET : SCONCE

DIMENSIONS

20 H, 8 W, 5 D IN

WEIGHT

51 H, 20 W, 13 D CM

PRICE

APPROX. 7 LBS / 3 KG

VOLTAGE

FROM \$6400

LAMPING

120-240

ETL / CB / CE / UKCA

MAX 7W

BULB INCLUDED

2200-2700K WARM DIM

120V : GU10, 4W

240V : GU10, 5.5W

DEPOSIT

50% UPON ORDER

BALANCE

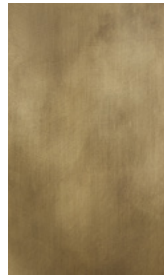
DUE PRIOR TO SHIPPING

LEAD TIME

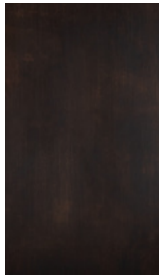
PLEASE REFER TO WEBSITE

FINISHED AND ASSEMBLED BY HAND IN NY
DOMESTIC AND IMPORTED COMPONENTS

A P P A R A T U S



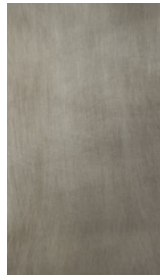
AGED BRASS



OIL-RUBBED BRONZE



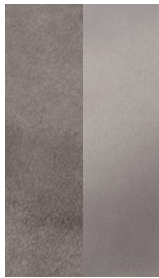
BLACKENED BRASS



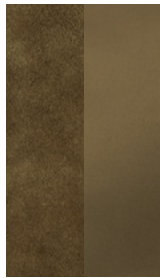
TARNISHED SILVER



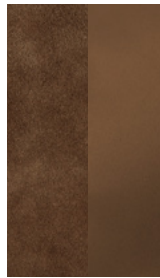
ICE



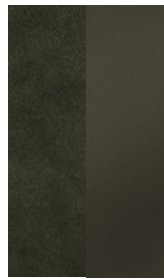
PEWTER



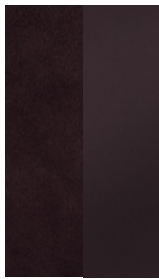
BRONZE



SEPIA



JUNIPER



PLUM



BLACK

METAL

SUEDE / SATIN

STARLET : SCONCE

AGED BRASS [WAXED]

OIL-RUBBED BRONZE [WAXED]

BLACKENED BRASS [WAXED]

TARNISHED SILVER [LACQUERED] ADD 35%

ICE

PEWTER

BRONZE

SEPIA

JUNIPER

PLUM

BLACK