

# A P P A R A T U S



AGED BRASS / BLACKENED BRASS

## TRAPEZE : 6 PENDANT

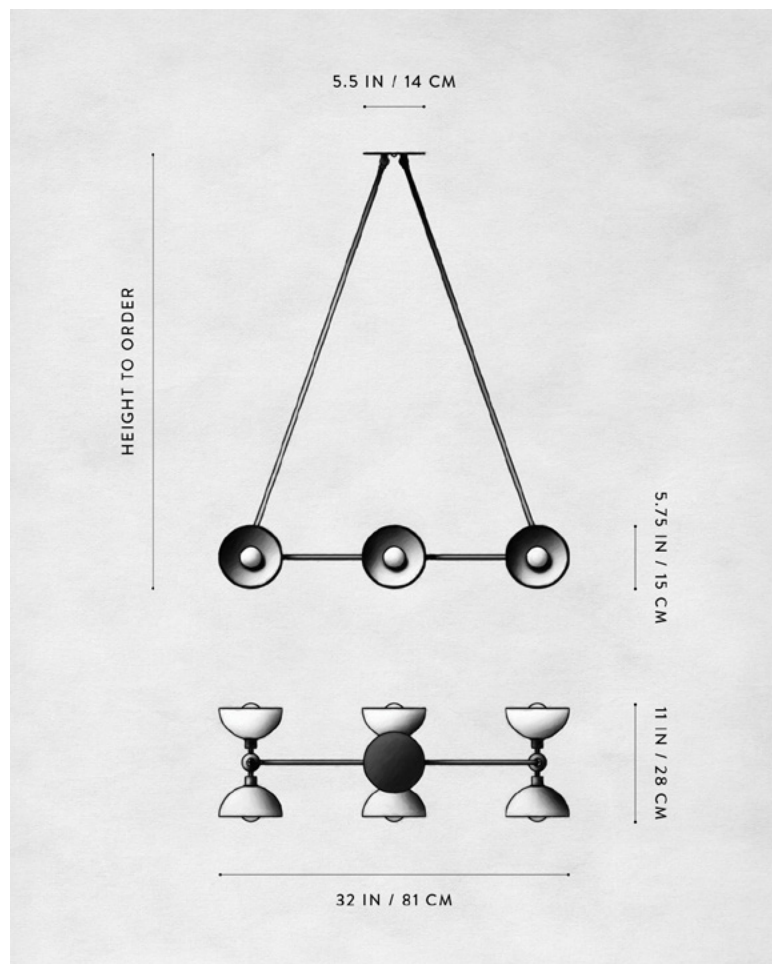
### REFERENCE

MOLECULAR GEOMETRY  
CAPTURED STATES OF MOTION

### COMPOSITION

SPHERES AND LINE SEGMENTS  
TRIANGULAR SUSPENSION  
BRASS OR HAND-CAST PORCELAIN BOWLS

# A P P A R A T U S



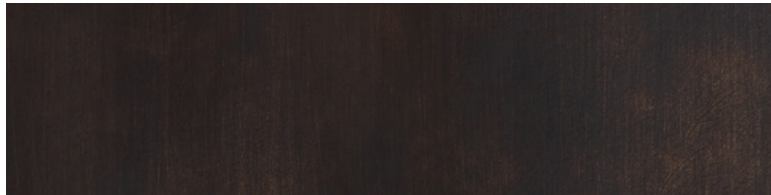
## TRAPEZE : 6 PENDANT

DIMENSIONS	32 W, 11 D IN 81 W, 28 D CM HEIGHT TO ORDER
WEIGHT	APPROX. 10 LBS / 5 KG
PRICE	FROM \$6700 BRASS FROM \$7300 PORCELAIN OR TWO-TONE BOWL TWO-TONE IS AGED BRASS BOWL INTERIOR WITH BLACKENED BRASS BOWL EXTERIOR
MINIMUM HEIGHT INCLUDES ADD HEIGHT	16 IN 60 IN \$20 / IN
VOLTAGE	120-240 UL / CE
LAMPING BULB INCLUDED	MAX 40W 6 X 3.8W DIMMABLE LED BULB 220 LUMENS EACH 2000 - 2800K 120V : E12 SPHERE I : MATTE WHITE 240V : E14 SPHERE I : MATTE WHITE
BULB LIFE	15,000 HOURS
DEPOSIT BALANCE LEAD TIME	50% UPON ORDER DUE PRIOR TO SHIPPING PLEASE REFER TO WEBSITE
	FINISHED AND ASSEMBLED BY HAND IN NY DOMESTIC AND IMPORTED COMPONENTS

# A P P A R A T U S



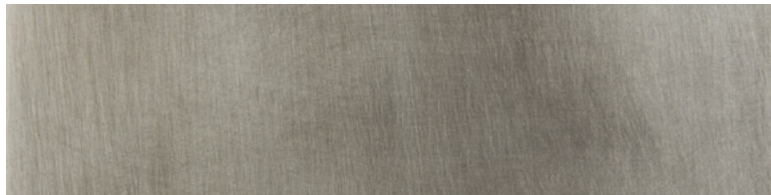
AGED BRASS



OIL-RUBBED BRONZE



BLACKENED BRASS



TARNISHED SILVER

METAL

TRAPEZE

AGED BRASS [WAXED]

OIL-RUBBED BRONZE [WAXED]

BLACKENED BRASS [WAXED]

TARNISHED SILVER [LACQUERED] ADD 35%