

A P P A R A T U S



AGED BRASS / PORCELAIN

TRAPEZE : 6 SURFACE

REFERENCE

MOLECULAR GEOMETRY
CAPTURED STATES OF MOTION

COMPOSITION

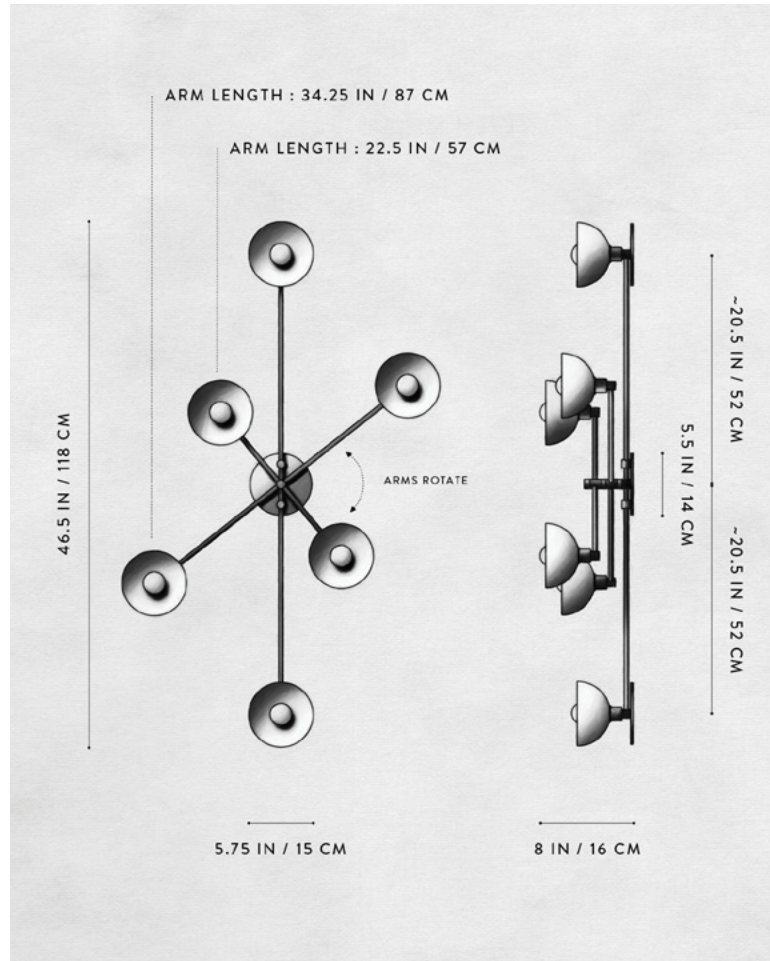
SPHERES AND LINE SEGMENTS
FIXED AND MOVABLE ELEMENTS
BRASS OR HAND-CAST PORCELAIN BOWLS

A P P A R A T U S



AGED BRASS / PORCELAIN

A P P A R A T U S



DIMENSIONS

WEIGHT

PRICE

VOLTAGE

LAMPING

BULB INCLUDED

BULB LIFE

DEPOSIT

BALANCE

LEAD TIME

TRAPEZE : 6 SURFACE

46.5 L, 8 D, 34.25 W IN

118 L, 20 D, 87 W CM

APPROX. 9 LBS / 4 KGG

FROM \$7200 BRASS

FROM \$7800 PORCELAIN OR TWO-TONE BOWL

TWO-TONE IS AGED BRASS BOWL INTERIOR

WITH BLACKENED BRASS BOWL EXTERIOR

120-240

UL / CE

MAX 40W

6 X 3.8W DIMMABLE LED BULB

220 LUMENS EACH

2000 - 2800K

120V : E12 SPHERE I : MATTE WHITE

240V : E14 SPHERE I : MATTE WHITE

15,000 HOURS

50% UPON ORDER

DUE PRIOR TO SHIPPING

PLEASE REFER TO WEBSITE

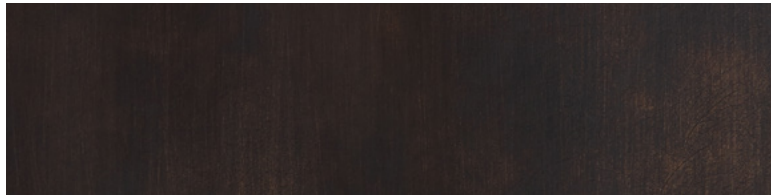
FINISHED AND ASSEMBLED BY HAND IN NY

DOMESTIC AND IMPORTED COMPONENTS

A P P A R A T U S



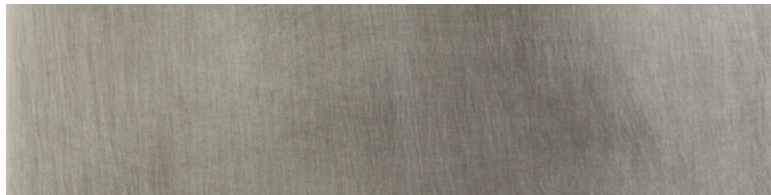
AGED BRASS



OIL-RUBBED BRONZE



BLACKENED BRASS



TARNISHED SILVER

METAL

TRAPEZE

AGED BRASS [WAXED]

OIL-RUBBED BRONZE [WAXED]

BLACKENED BRASS [WAXED]

TARNISHED SILVER [LACQUERED] ADD 35%