

A P P A R A T U S



AGED BRASS / PORCELAIN

TRAPEZE : 7 MOBILE

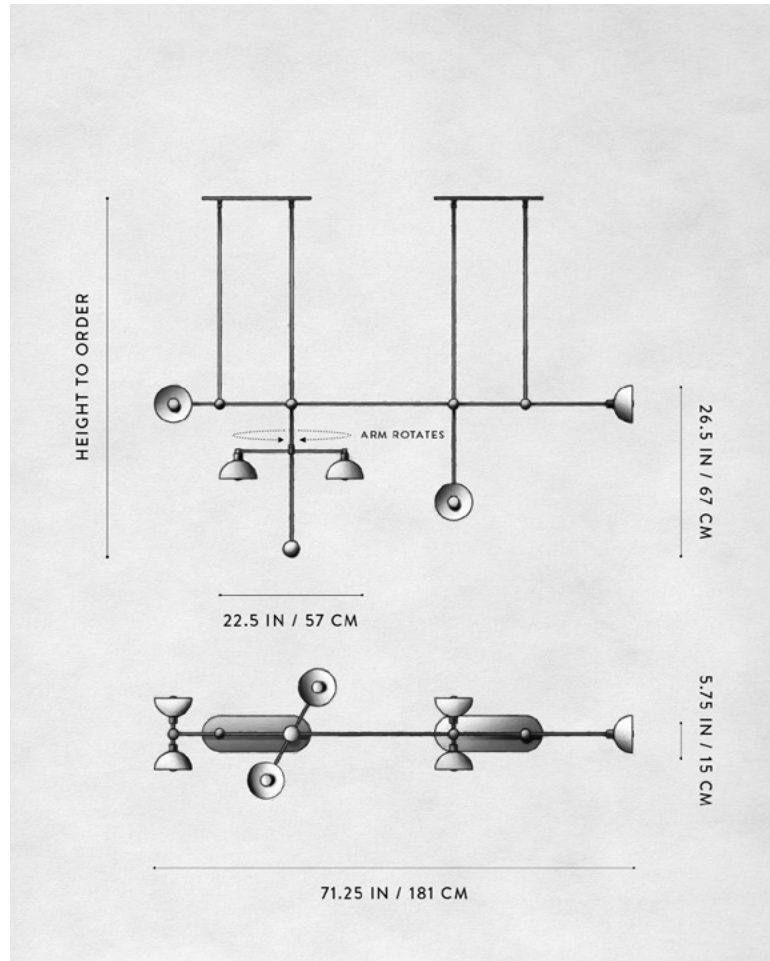
REFERENCE

MOLECULAR GEOMETRY
CAPTURED STATES OF MOTION

COMPOSITION

SPHERES AND LINE SEGMENTS
FIXED AND MOVABLE ELEMENTS
BRASS OR HAND-CAST PORCELAIN BOWLS

A P P A R A T U S



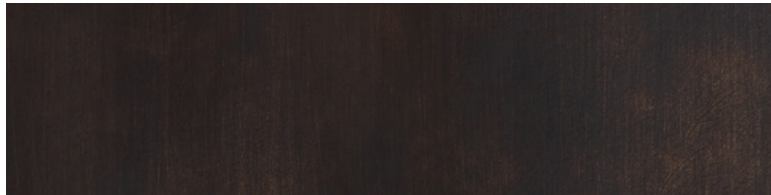
TRAPEZE : 7 MOBILE

DIMENSIONS	71.25 W, 11.25 D IN 181 W, 29 D CM HEIGHT TO ORDER
WEIGHT	APPROX. 20 LBS / 9 KG
PRICE	FROM \$11350 BRASS FROM \$12050 PORCELAIN OR TWO-TONE BOWL TWO-TONE IS AGED BRASS BOWL INTERIOR WITH BLACKENED BRASS BOWL EXTERIOR
MINIMUM HEIGHT INCLUDES	36 IN
ADD HEIGHT	85 IN \$40 / IN
VOLTAGE	120-240 UL / CE
LAMPING	MAX 40W
BULB INCLUDED	7 X 3.8W DIMMABLE LED BULB 220 LUMENS EACH 2000 - 2800K 120V : E12 SPHERE I : MATTE WHITE 240V : E14 SPHERE I : MATTE WHITE
BULB LIFE	15,000 HOURS
DEPOSIT	50% UPON ORDER
BALANCE	DUE PRIOR TO SHIPPING
LEAD TIME	PLEASE REFER TO WEBSITE
	FINISHED AND ASSEMBLED BY HAND IN NY DOMESTIC AND IMPORTED COMPONENTS

A P P A R A T U S



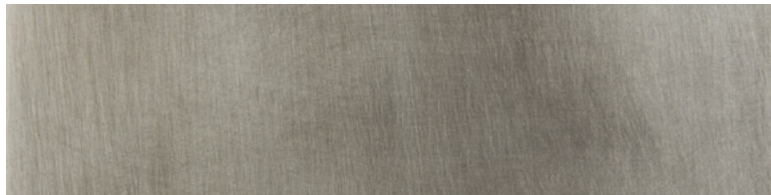
AGED BRASS



OIL-RUBBED BRONZE



BLACKENED BRASS



TARNISHED SILVER

METAL

TRAPEZE

AGED BRASS [WAXED]

OIL-RUBBED BRONZE [WAXED]

BLACKENED BRASS [WAXED]

TARNISHED SILVER [LACQUERED] ADD 35%