

A P P A R A T U S



AGED BRASS

TWIG : SCONCE

REFERENCE

MOLECULAR GEOMETRY
DENDROLOGICAL STRUCTURE

COMPOSITION

LINEAR ARMATURE WITH ARTICULATED CONNECTIONS
BRASS SHADES PROVIDE DIRECTIONAL LIGHT

A P P A R A T U S



TWIG : SCONCE

DIMENSIONS

14 H, 4.75 W, 6.25 D IN

36 H, 12 W, 16 D CM

WEIGHT

APPROX. 5 LBS / 2 KG

PRICE

FROM \$2200

VOLTAGE

120-240

UL / CE

LAMPING

MAX 40W

BULB INCLUDED

6W DIMMABLE LED BULB

480 LUMENS

2000 - 2800K

120V : E26 SPHERE II : MATTE WHITE

240V : E27 SPHERE II : MATTE WHITE

BULB LIFE

15,000 HOURS

DEPOSIT

50% UPON ORDER

BALANCE

DUE PRIOR TO SHIPPING

LEAD TIME

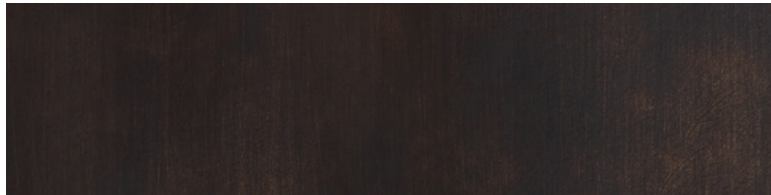
PLEASE REFER TO WEBSITE

FINISHED AND ASSEMBLED BY HAND IN NY
DOMESTIC AND IMPORTED COMPONENTS

A P P A R A T U S



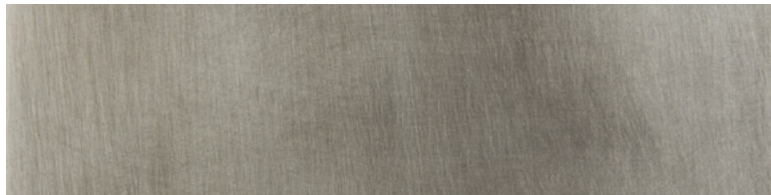
AGED BRASS



OIL-RUBBED BRONZE



BLACKENED BRASS



TARNISHED SILVER

METAL

TWIG

AGED BRASS [WAXED]

OIL-RUBBED BRONZE [WAXED]

BLACKENED BRASS [WAXED]

TARNISHED SILVER [LACQUERED] ADD 35%