

A P P A R A T U S



AGED BRASS

TWIG : SCONCE

REFERENCE

MOLECULAR GEOMETRY  
DENDROLOGICAL STRUCTURE

COMPOSITION

LINEAR ARMATURE WITH ARTICULATED CONNECTIONS  
BRASS SHADES PROVIDE DIRECTIONAL LIGHT

# A P P A R A T U S



TWIG : SCONCE

DIMENSIONS

14 H, 4.75 W, 6.25 D IN

36 H, 12 W, 16 D CM

WEIGHT

APPROX. 5 LBS / 2 KG

PRICE

FROM \$1800

VOLTAGE

120-240

UL / CE

LAMPING

MAX 40W

BULB INCLUDED

6W DIMMABLE LED BULB

480 LUMENS

2500K

120V : E26 GLOBE LG : MATTE WHITE

240V : E27 GLOBE LG : MATTE WHITE

BULB LIFE

30,000 HOURS

DEPOSIT

50% UPON ORDER

BALANCE

PRIOR TO SHIPPING

LEAD TIME

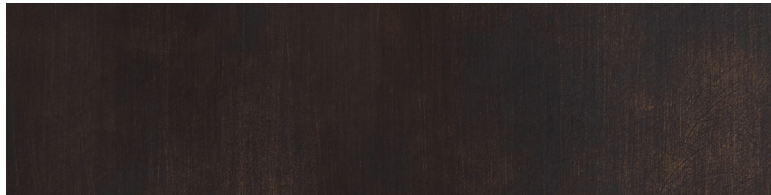
PLEASE REFER TO WEBSITE

FINISHED AND ASSEMBLED BY HAND IN NY  
DOMESTIC AND IMPORTED COMPONENTS

# A P P A R A T U S



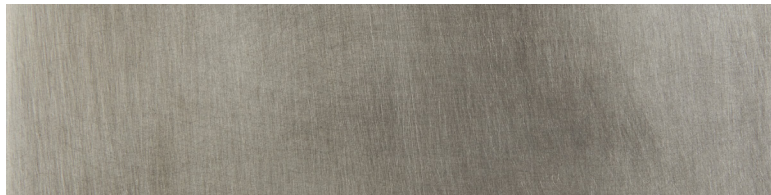
AGED BRASS



OIL-RUBBED BRONZE



BLACKENED BRASS



TARNISHED SILVER

METAL

TWIG : SCONCE

AGED BRASS [WAXED]

OIL-RUBBED BRONZE [WAXED]

BLACKENED BRASS [WAXED]

TARNISHED SILVER [LACQUERED] ADD 35%