



A hand-blown glass pendant hangs from an elegant, arcing curve — both cloaked in chainmail to strike a balance between strength and delicacy. A rectangular base grounds the lamp, featuring a dimmer knob to control the luminescent glow.

Armor Floor Lamp

Dimensions

28.5"W x 8"D x 81.5"H

Materials

hand-blown glass, brass, steel and finished stainless steel
chainmail

Metal Finish

satin brass, antique brass, oil-rubbed bronze, satin black, satin
nickel or antique nickel

Lead time

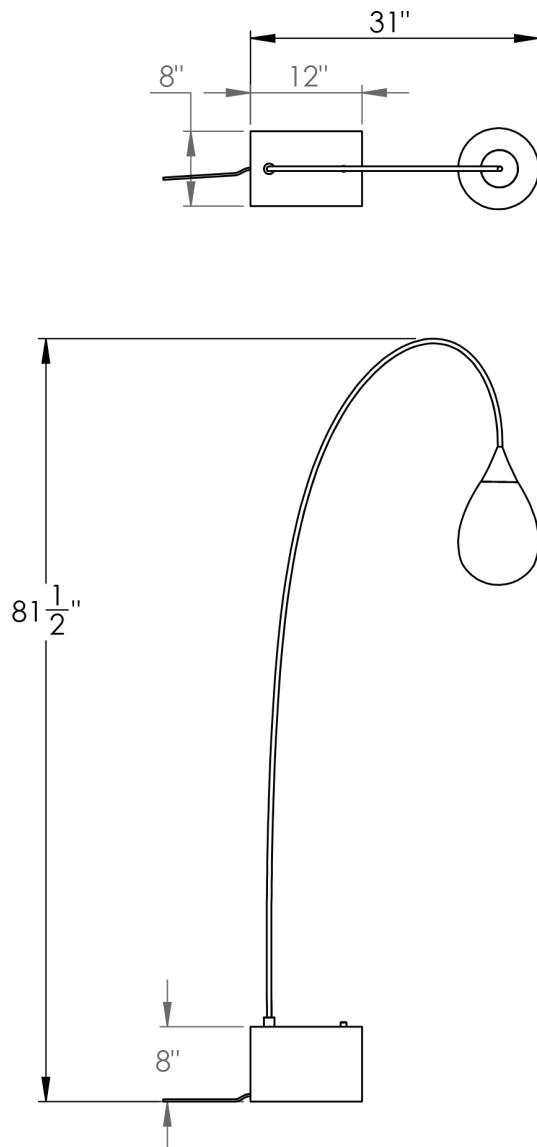
8-12 weeks

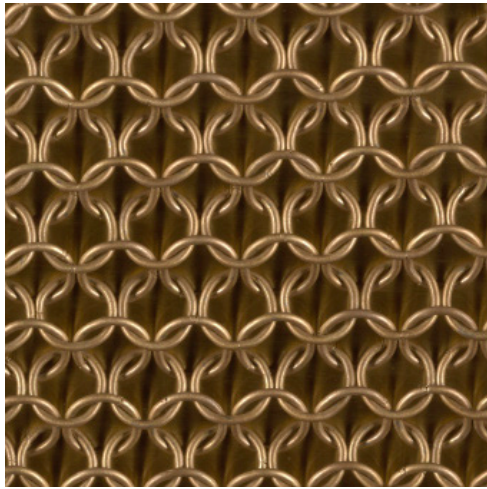
Lamping

E26 | 120V | 60W

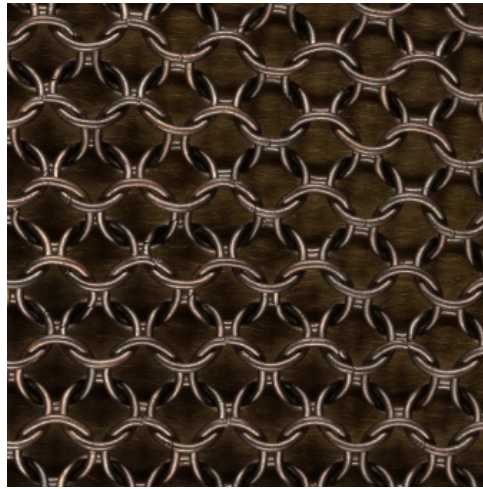
9.5W dimmable LED bulb included

120V; 950 lumens; 2700k color temperature

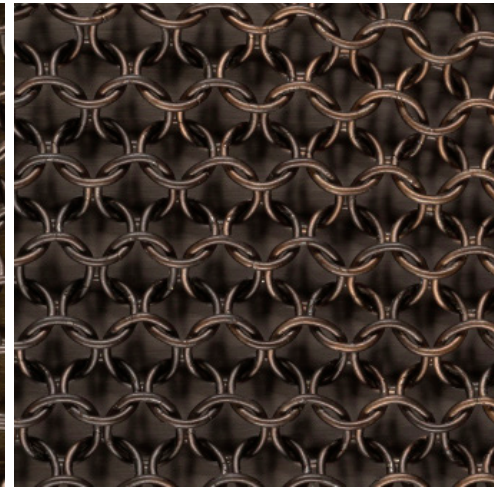




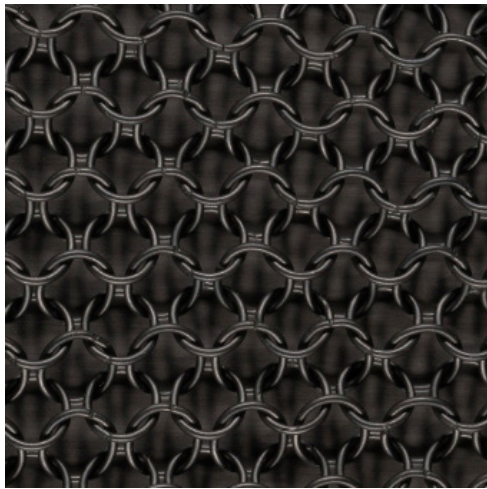
Satin Brass



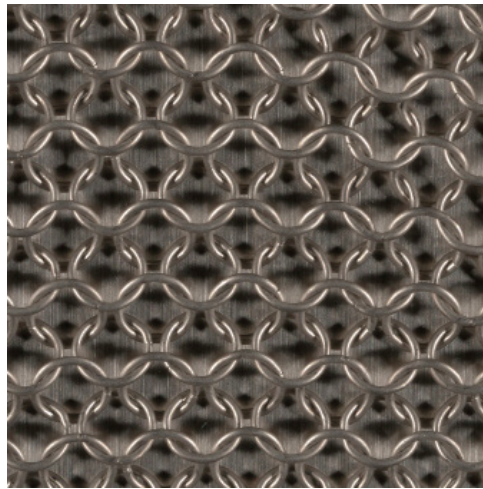
Antique Brass



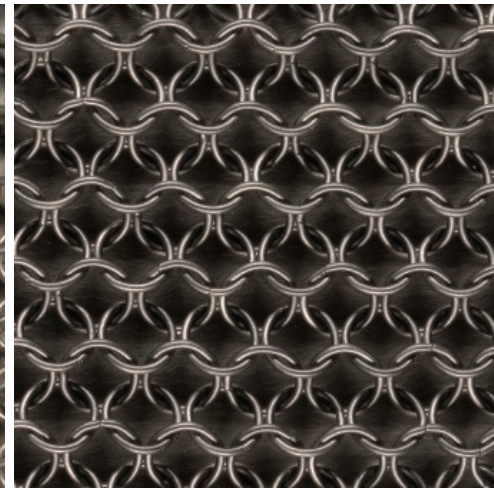
Oil-Rubbed Bronze



Satin Black



Satin Nickel



Antique Nickel