



RIVE

ARMCHAIR

Featuring sculptural and almost monumental forms, this armchair showcases a raw, solid structure in concrete. The concrete surface presents a particular effect obtained through corrosion with sea salt. On top, a soft, furry-like seat is available with covers in different colors and textures.

TECHNICAL INFORMATION

COMPOSITION:

Base in concrete.
Cylinder in brass.
Cushions upholstered
in Mongolia and Ragmate fabric.

1

SIZE: W 75, D 82 H 56. cm

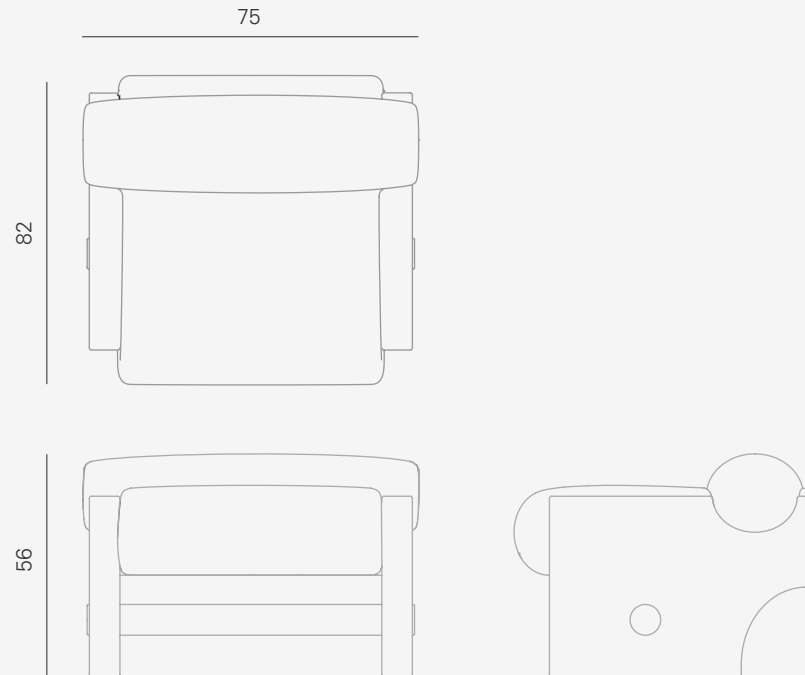
PACKAGE SIZE:
W 85, D 91, H 79 cm

WEIGHT: 107 Kg

PACKAGE WEIGHT: 176 Kg

RRP excl. VAT and shipping

ESTIMATED DELIVERY TIME: 9 weeks

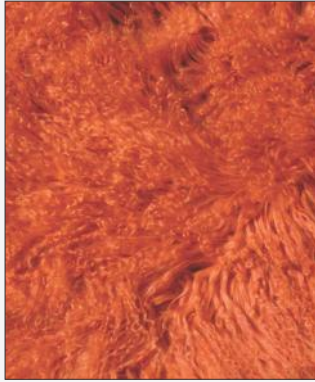


AVAILABLE COLORS

The **colors of Draga&Aurel** resins are absolutely unique as they are handmade using a combination of different shades. We invite you to choose the color reference for your final product from the samples shown here for illustrative purposes. Allow for a certain margin of tolerance in its reproduction.

Draga&Aurel products

may sometimes have small "imperfections", reflecting the handcrafting process. It is important for us that our customers consider such "imperfections" to hold aesthetic value and as a guarantee of craftsmanship.



C01 MONGOLIA ORANGE



C02 MONGOLIA BEIGE



C03 MONGOLIA GRAY



C04 MONGOLIA BLACK