



## JOY

### INDOOR WALL LAMP PROVIDING DIFFUSE LIGHT

Inspired by the 1970s and the Space Age, this organic light “capsule” features deep colors resulting from combined layers of colored epoxy resin and dimmable neon lighting. Complementary shades are layered to create a soft, blended glow effect when turned on.

Entirely handcrafted in the Draga&Aurel workshop in Como, this wall lamp is available in a wide range of vibrant color variations, achieved after many tests carried out to find the perfect combinations of colors.

# TECHNICAL INFORMATION

## COMPOSITION:

Front diffuser in cast resin.  
Body in satin brass.  
Dimmable neon.

## POWER SUPPLY:

230V 50/60Hz 0.2A  
120V 50/60Hz 0.4A  
40W - DIMMABLE

## CERTIFICATION:



## WARNINGS:

Resin products should not be placed outdoors, or exposed directly to sunlight/high temperatures.



## POWER SUPPLY SPECIFICATIONS:

Option A: Visible cable with  
Schuko plug  
Option B: Concealed wall wiring

# 1

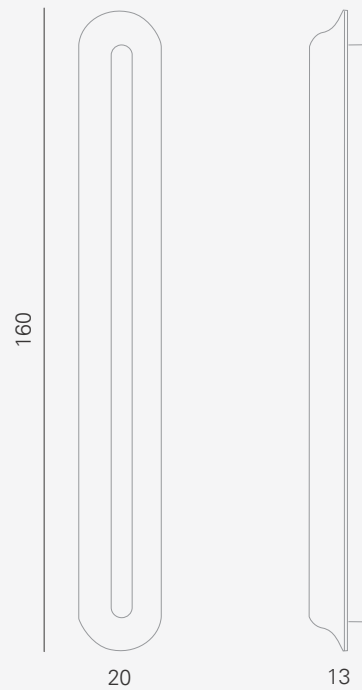
**SIZE: W 20, D 13, H 160. cm**

PACKAGE SIZE:  
W 58, D 187, H 47 cm

**WEIGHT: 20 Kg**

PACKAGE WEIGHT: 60 Kg

RRP excl. VAT and shipping  
ESTIMATED DELIVERY TIME: 9 weeks



# 2

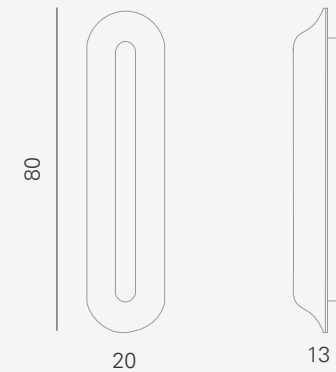
**SIZE: W 20, D 13, H 80.cm**

PACKAGE SIZE:  
W 70, D 107, H 30 cm

**WEIGHT: 11 Kg**

PACKAGE WEIGHT: 37 Kg

RRP excl. VAT and shipping  
ESTIMATED DELIVERY TIME: 9 weeks



# AVAILABLE COLORS

The **colors of Draga&Aurel** resins are absolutely unique as they are handmade using a combination of different shades. We invite you to choose the color reference for your final product from the samples shown here for illustrative purposes. Allow for a certain margin of tolerance in its reproduction.

## Draga&Aurel products

may sometimes have small "imperfections", reflecting the handcrafting process. It is important for us that our customers consider such "imperfections" to hold aesthetic value and as a guarantee of craftsmanship.



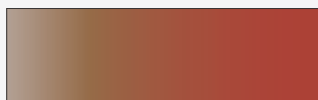
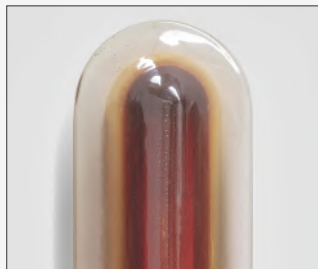
R21 / RED



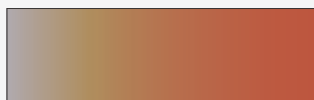
R22 / FLERY RED



R23 / RED CLAY



R24 / MANDARIN RED



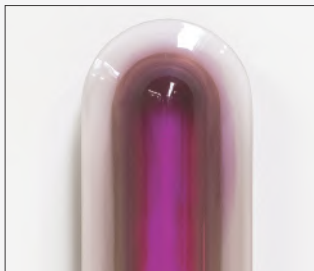
R25 / ORANGE



R26 / CANARY YELLOW



R27 / PURPLE



R28 / FUCHSIA



R29 / MAGENTA



R30 / PINK

# AVAILABLE COLORS

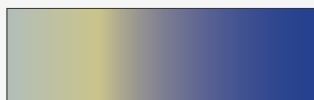
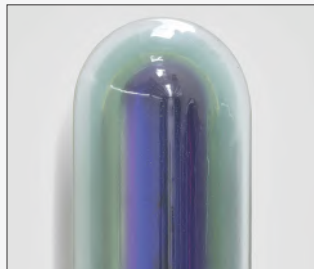
The **colors of Draga&Aurel** resins are absolutely unique as they are handmade using a combination of different shades. We invite you to choose the color reference for your final product from the samples shown here for illustrative purposes. Allow for a certain margin of tolerance in its reproduction.

## Draga&Aurel products

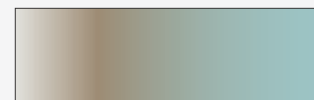
may sometimes have small "imperfections", reflecting the handcrafting process. It is important for us that our customers consider such "imperfections" to hold aesthetic value and as a guarantee of craftsmanship.



R31 / ROYAL BLUE



R32 / BLUE



R33 / ISLAND PARADISE



R34 / GREEN AND INDIGO



R35 / SOFT GREEN



R79 / GREEN FLUO



R80 / GREEN LIME



R78 / YELLOW FLUO



R86 / SOFT BLUE