

JOY CIRCLE

INDOOR WALL LAMP PROVIDING DIFFUSE LIGHT

Inspired by the 1970s and the Space Age, these organic lighting “circles” feature deep colors resulting from combined layers of colored epoxy resin and dimmable neon light. Complementary shades are layered to create a soft, blended glow effect when turned on.

Entirely handcrafted in the Draga&Aurel workshop in Como. This wall lamp is available in a wide range of vibrant color variations, achieved after many tests carried out to find the perfect combinations of colors.

TECHNICAL INFORMATION

COMPOSITION:

Front diffuser in cast resin.
Body in satin brass.
Dimmable neon.

POWER SUPPLY:

230V 50/60Hz 0.2A
120V 50/60Hz 0.4A
40W - DIMMABLE

CERTIFICATION:



WARNINGS:

Resin products should not be placed outdoors, or exposed directly to sunlight/high temperatures.



POWER SUPPLY SPECIFICATIONS:

Option A: Visible cable with
Schuko plug
Option B: Concealed wall wiring

1

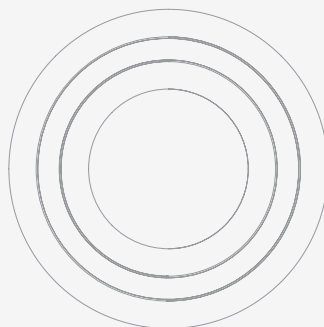
SIZE: Ø 80, D 14,
PACKAGE SIZE:
W 101, D 95, H 37 cm

WEIGHT: 29,5 Kg
PACKAGE WEIGHT: 65 Kg

RRP excl. VAT and shipping
ESTIMATED DELIVERY TIME: 9 weeks

14

80



2

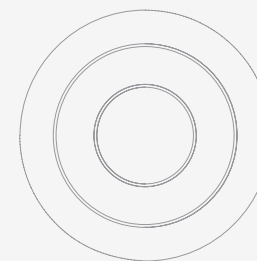
SIZE: Ø 36, D 12,
PACKAGE SIZE:
W 60, D 50, H 37 cm

WEIGHT: 18 Kg
PACKAGE WEIGHT: 28 Kg

RRP excl. VAT and shipping
ESTIMATED DELIVERY TIME: 9 weeks

12

35



AVAILABLE COLORS

The **colors of Draga&Aurel** resins are absolutely unique as they are handmade using a combination of different shades. We invite you to choose the color reference for your final product from the samples shown here for illustrative purposes. Allow for a certain margin of tolerance in its reproduction.

Draga&Aurel products

may sometimes have small "imperfections", reflecting the handcrafting process. It is important for us that our customers consider such "imperfections" to hold aesthetic value and as a guarantee of craftsmanship.



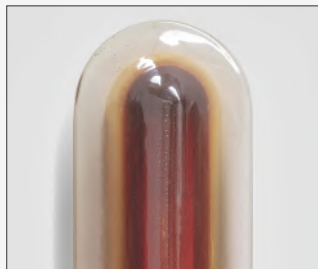
R21 / RED



R22 / FLERY RED



R23 / RED CLAY



R24 / MANDARIN RED



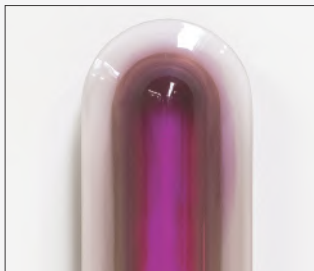
R25 / ORANGE



R26 / CANARY YELLOW



R27 / PURPLE



R28 / FUCHSIA



R29 / MAGENTA



R30 / PINK

AVAILABLE COLORS

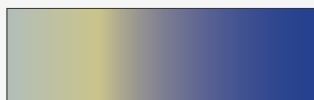
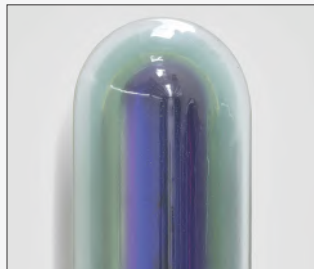
The **colors of Draga&Aurel** resins are absolutely unique as they are handmade using a combination of different shades. We invite you to choose the color reference for your final product from the samples shown here for illustrative purposes. Allow for a certain margin of tolerance in its reproduction.

Draga&Aurel products

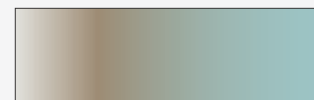
may sometimes have small "imperfections", reflecting the handcrafting process. It is important for us that our customers consider such "imperfections" to hold aesthetic value and as a guarantee of craftsmanship.



R31 / ROYAL BLUE



R32 / BLUE



R33 / ISLAND PARADISE



R34 / GREEN AND INDIGO



R35 / SOFT GREEN



R79 / GREEN FLUO



R80 / GREEN LIME



R78 / YELLOW FLUO



R86 / SOFT BLUE