



JADE

STOOL

This stool looks like a precious gem, featuring ethereal transparency, a luxurious texture, and a reflective surface that plays poetically with the light.

The surface is handmade, with 10 cm of resin resting on a brass frame with special veins, achieved thanks to a handcrafted surface treatment.

The resin colors are inspired by the magical mineral color palette of Transparency matters.

TECHNICAL INFORMATION

COMPOSITION:

Top in cast resin.
Base in etched brass.

WARNINGS:

Resin products should not be
placed outdoors, or exposed
directly to sunlight/
high temperatures.



1

SIZE: Ø 40 cm, H 46.

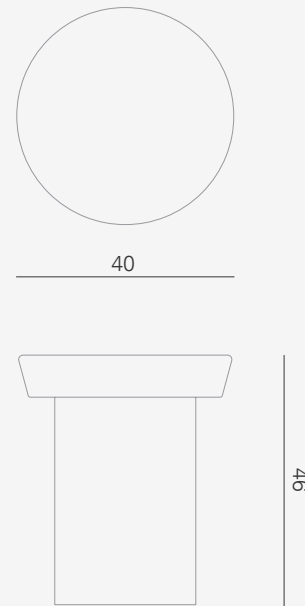
PACKAGE SIZE :
W 64, D 64, H 89 cm

WEIGHT: 13 Kg

PACKAGE WEIGHT: 41 Kg

RRP excl. VAT and shipping

ESTIMATED DELIVERY TIME: 9 weeks

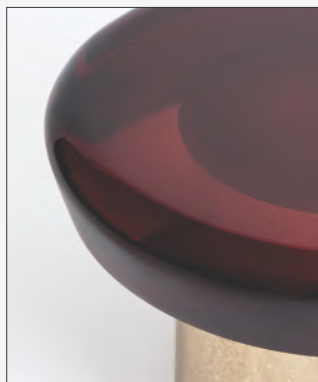


AVAILABLE COLORS

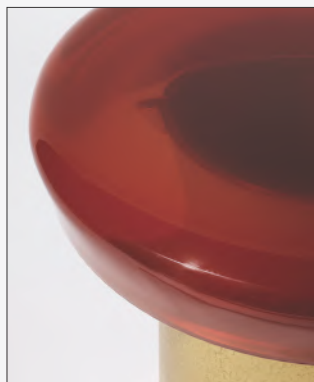
The **colors of Draga&Aurel** resins are absolutely unique as they are handmade using a combination of different shades. We invite you to choose the color reference for your final product from the samples shown here for illustrative purposes. Allow for a certain margin of tolerance in its reproduction.

Draga&Aurel products

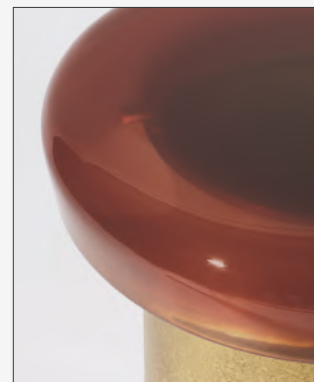
may sometimes have small "imperfections", reflecting the handcrafting process. It is important for us that our customers consider such "imperfections" to hold aesthetic value and as a guarantee of craftsmanship.



R01 / RUBY-RED



R02 / CHERRY



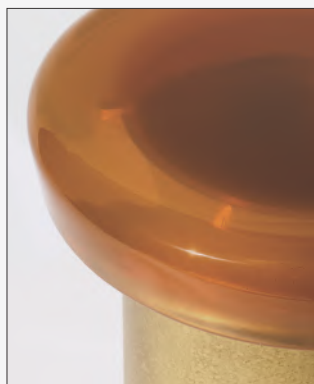
R03 / RED CLAY



R83 / WHISKY



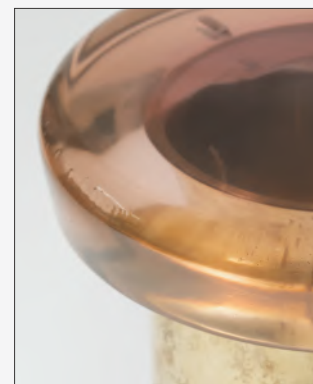
R04 / RED ORANGE



R05 / SUNSET



R06 / AUTUMN



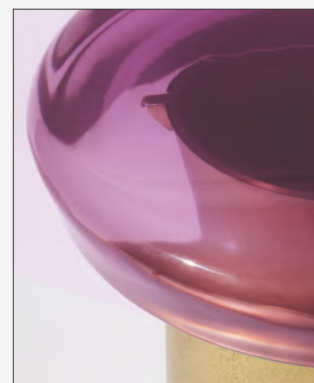
R07 / MELON



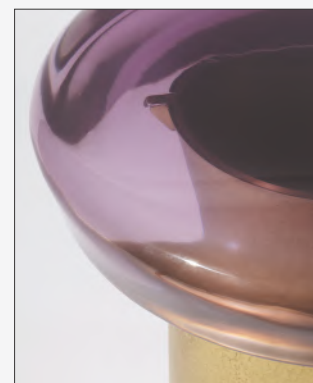
R08 / PURPLE SAPPHIRE



R09 / FUCHSIA



R10 / ROSE VIOLET



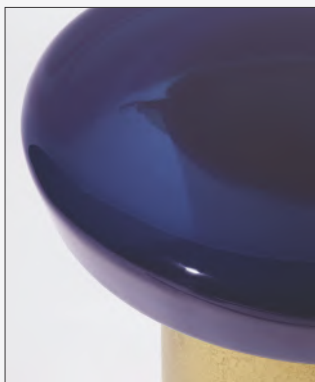
R11 / GRAPE

AVAILABLE COLORS

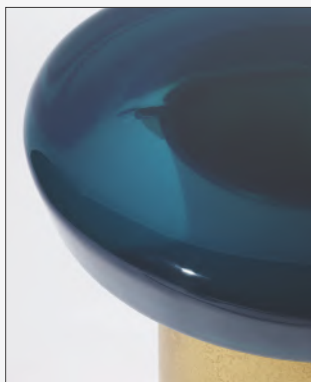
The **colors of Draga&Aurel** resins are absolutely unique as they are handmade using a combination of different shades. We invite you to choose the color reference for your final product from the samples shown here for illustrative purposes. Allow for a certain margin of tolerance in its reproduction.

Draga&Aurel products

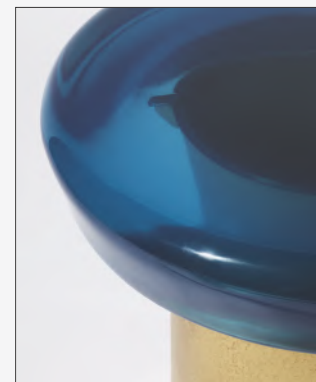
may sometimes have small "imperfections", reflecting the handcrafting process. It is important for us that our customers consider such "imperfections" to hold aesthetic value and as a guarantee of craftsmanship.



R12 / BLUE SAPPHIRE



R13 / OCEAN BLUE



R14 / COBALT



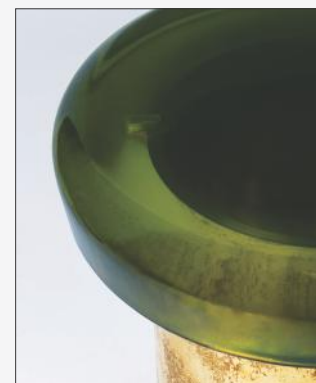
R15 / MOONSTONE



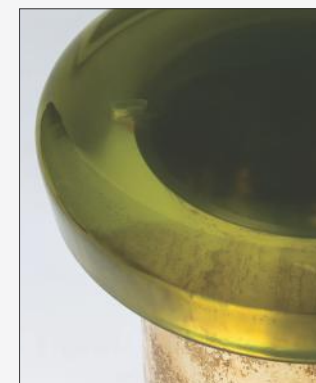
R16 / JADE



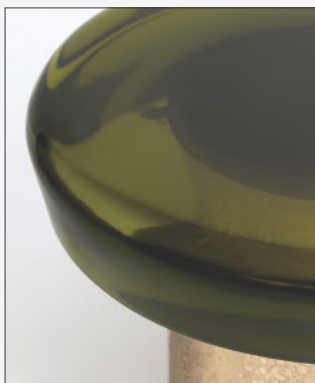
R17 / OLIVE



R18 / EMERALD



R19 / KELP FOREST



R20 / TOBACCO