

GOLIA

BENCH

Featuring sculptural and almost monumental forms, this bench showcases an unusual combination of materials: raw, solid concrete, together with the brightness of resin.

The base is made entirely of concrete and its surface presents a particular effect obtained through corrosion with sea salt, which brings the material to life.

TECHNICAL INFORMATION

COMPOSITION:

Top in cast resin.
Base in concrete.
Cylinder in brass.

WARNINGS:

Resin products should not be
placed outdoors, or exposed
directly to sunlight/
high temperatures.

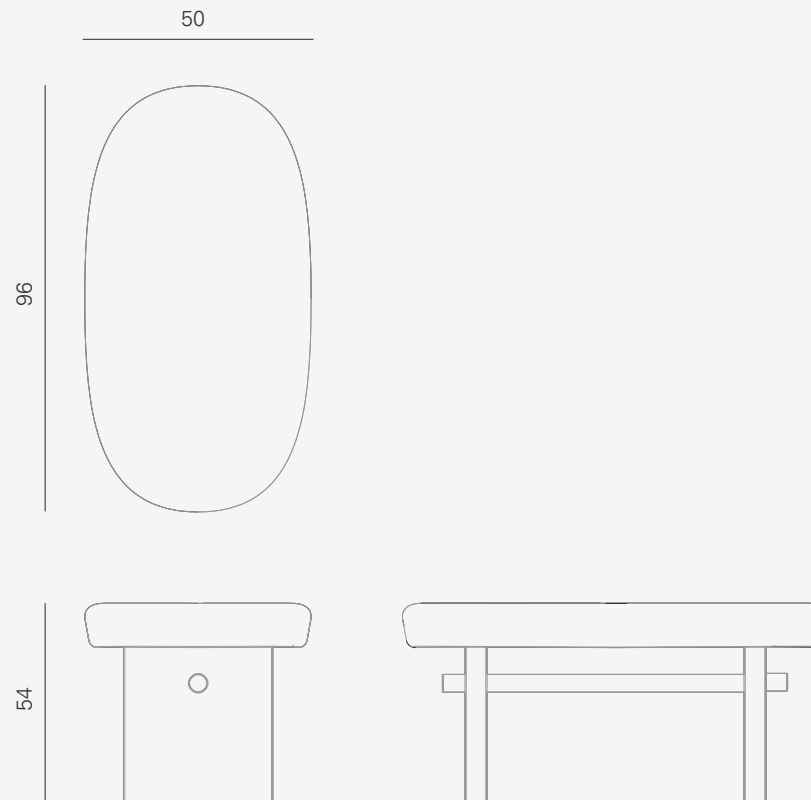


1

SIZE: W 96, D 50, H 44,
PACKAGE SIZE:
W 69, D 113 H 88 cm

WEIGHT: 57 Kg
PACKAGE WEIGHT: 101 Kg

RRP excl. VAT and shipping
ESTIMATED DELIVERY TIME: 9 weeks

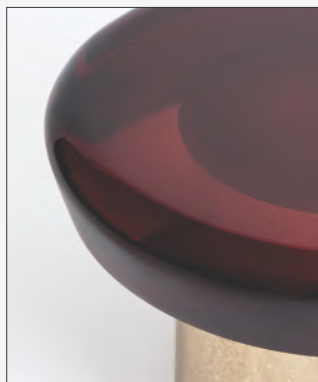


AVAILABLE COLORS

The **colors of Draga&Aurel** resins are absolutely unique as they are handmade using a combination of different shades. We invite you to choose the color reference for your final product from the samples shown here for illustrative purposes. Allow for a certain margin of tolerance in its reproduction.

Draga&Aurel products

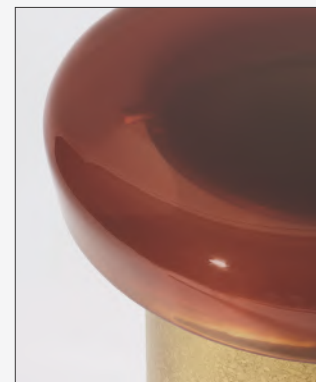
may sometimes have small "imperfections", reflecting the handcrafting process. It is important for us that our customers consider such "imperfections" to hold aesthetic value and as a guarantee of craftsmanship.



R01 / RUBY-RED



R02 / CHERRY



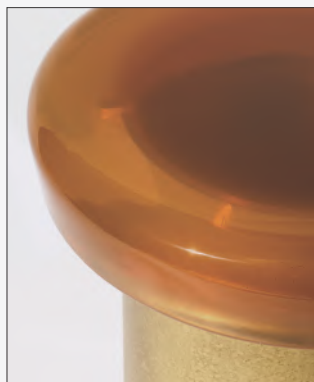
R03 / RED CLAY



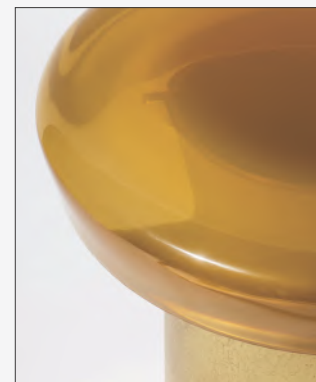
R83 / WHISKY



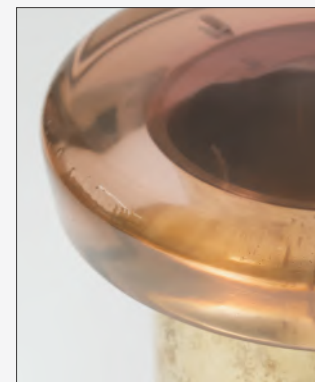
R04 / RED ORANGE



R05 / SUNSET



R06 / AUTUMN



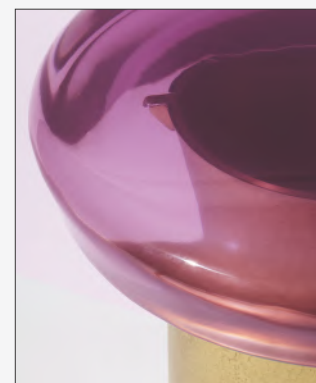
R07 / MELON



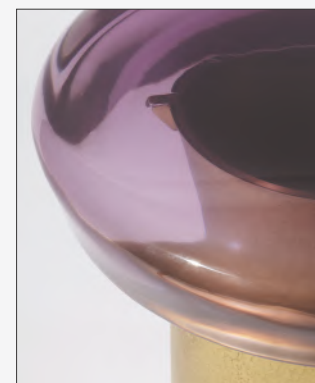
R08 / PURPLE SAPPHIRE



R09 / FUCHSIA



R10 / ROSE VIOLET



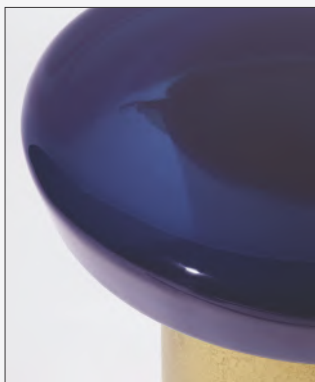
R11 / GRAPE

AVAILABLE COLORS

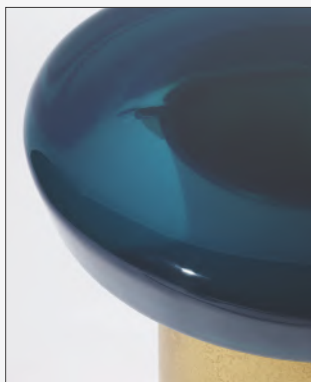
The **colors of Draga&Aurel** resins are absolutely unique as they are handmade using a combination of different shades. We invite you to choose the color reference for your final product from the samples shown here for illustrative purposes. Allow for a certain margin of tolerance in its reproduction.

Draga&Aurel products

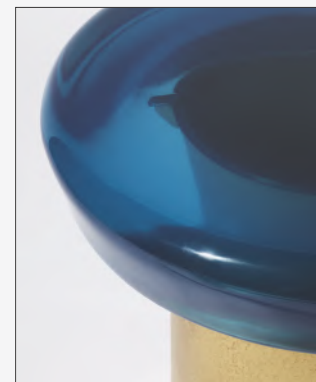
may sometimes have small "imperfections", reflecting the handcrafting process. It is important for us that our customers consider such "imperfections" to hold aesthetic value and as a guarantee of craftsmanship.



R12 / BLUE SAPPHIRE



R13 / OCEAN BLUE



R14 / COBALT



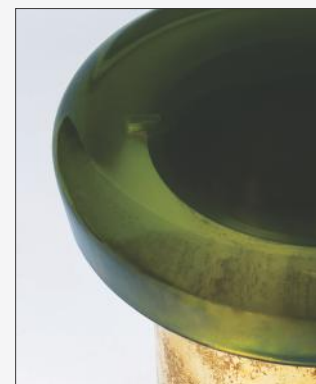
R15 / MOONSTONE



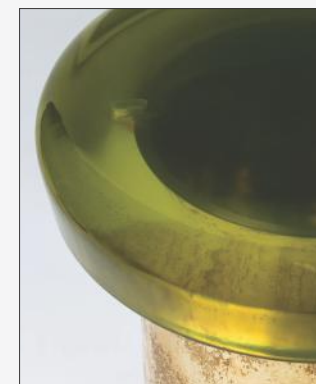
R16 / JADE



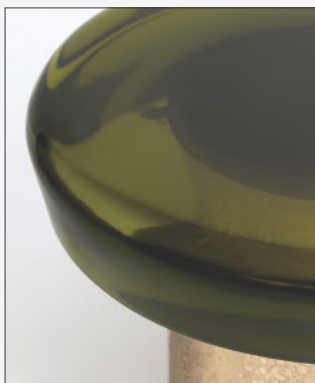
R17 / OLIVE



R18 / EMERALD



R19 / KELP FOREST



R20 / TOBACCO