



GOLIA

COFFEE TABLE

Characterized by sculptural, almost monumental forms, this coffee table features an unusual combination of materials: rough, solid concrete combined with the luminosity of resin.

The base is made of concrete and resin. Its surface has a special effect obtained by corrosion with sea salt, which brings the material to life. The resin, with its brightness and depth, reflects the outside world, changing according to the lights around it.

TECHNICAL INFORMATION

COMPOSITION:

Top in cast resin and concrete.
Base in cast resin and concrete.
Cylinder in brass.

WARNINGS:

Resin products should not be
placed outdoors, or exposed
directly to sunlight/
high temperatures.



1

SIZE: W 62, D 25, H 43. cm

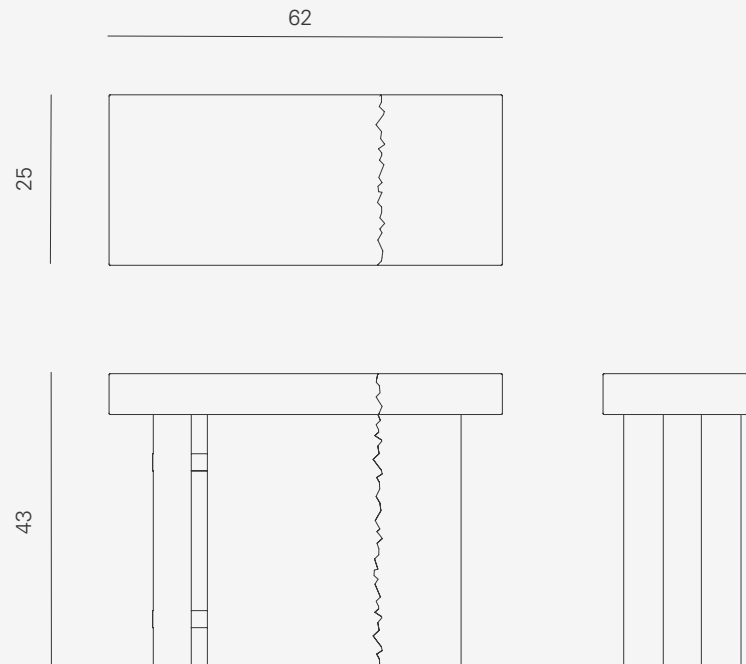
PACKAGE SIZE:
W 36, D 73, H 65 cm

WEIGHT: 40 Kg

PACKAGE WEIGHT: 59 Kg

RRP excl. VAT and shipping

ESTIMATED DELIVERY TIME: 9 weeks

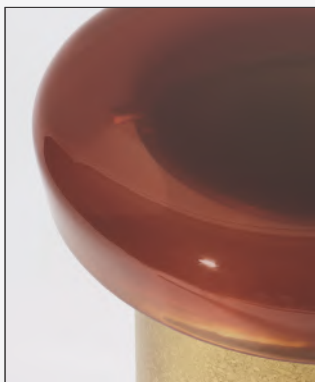


AVAILABLE COLORS

The **colors of Draga&Aurel** resins are absolutely unique as they are handmade using a combination of different shades. We invite you to choose the color reference for your final product from the samples shown here for illustrative purposes. Allow for a certain margin of tolerance in its reproduction.

Draga&Aurel products

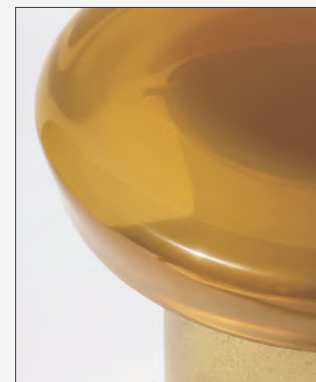
may sometimes have small "imperfections", reflecting the handcrafting process. It is important for us that our customers consider such "imperfections" to hold aesthetic value and as a guarantee of craftsmanship.



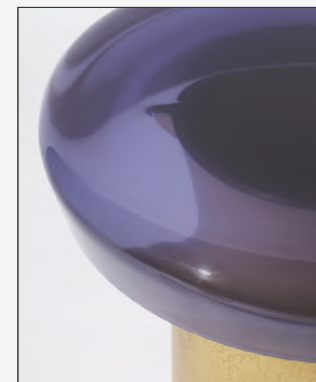
R03 / RED CLAY



R04 / RED ORANGE



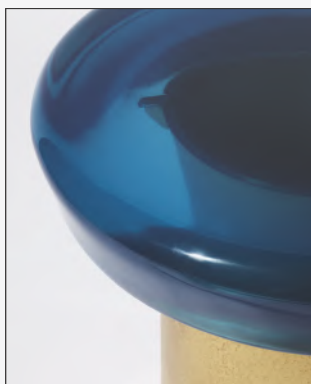
R06 / AUTUMN



R08 / PURPLE SAPPHIRE



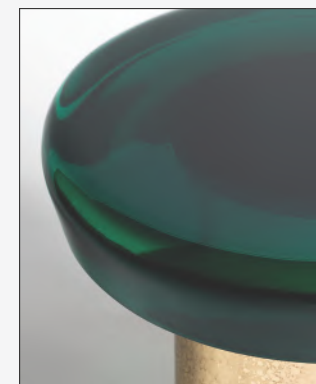
R10 / ROSE VIOLET



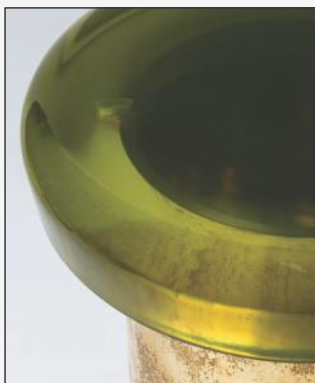
R14 / COBALT



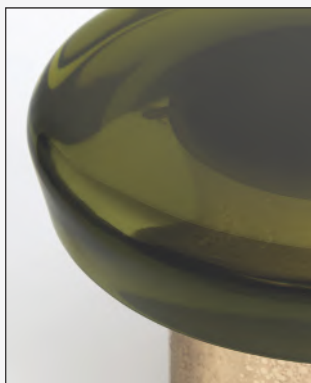
R15 / MOONSTONE



R16 / JADE



R19 / KELP FOREST



R20 / TOBACCO