



BEBA

ARMCHAIR

Freely inspired by Joe Colombo's Elda, the BEBA armchair looks like a blooming flower, inviting us to experience light-heartedness and beauty.

The sculpted forms and sartorial attention to detail alludes to haute-couture corsets: the utmost expression of femininity.

This effect is also given by the choice and workmanship of materials: the frame is made from painted fiberglass with a velvet-like matte effect; the contrasting black edge adds character and elegance; the seat is extremely cozy and the juxtaposition of two Marzotto Interiors velvets with different thicknesses (for the backrest: Belfast, a short-pile cotton velvet; for the seat cushion: Mara, a fur-effect acrylic velvet, or Alpaca, a velvet made from fine alpaca wool, both long-pile) intensifies its softness.

TECHNICAL INFORMATION

COMPOSITION:

Fiberglass structure.
Fabric Belfast velvet and Alpaca.
Profile in leather.

The product may be
customized with different
Fabrics and colots.

1

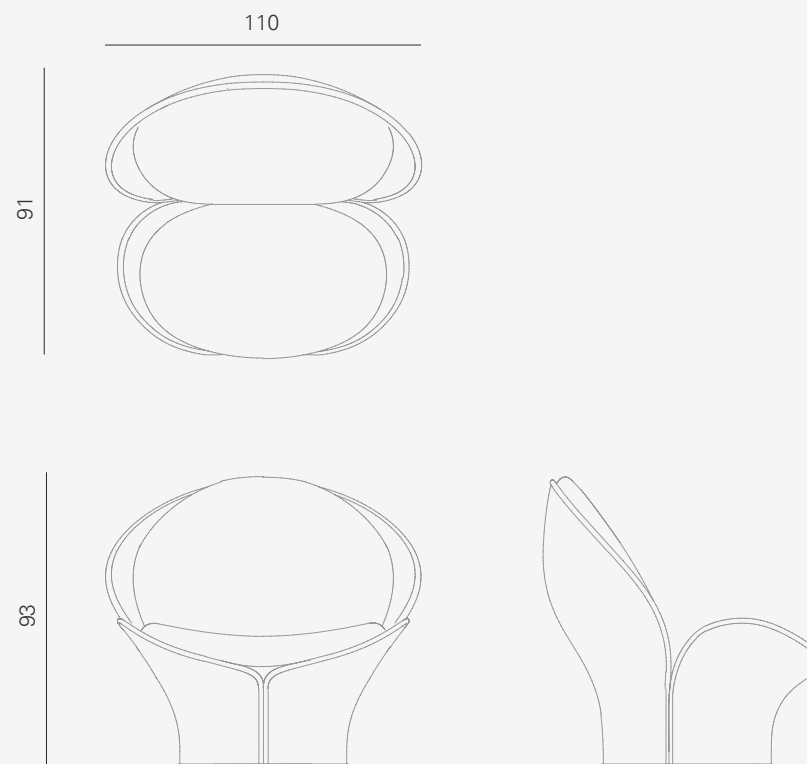
SIZE: W 110, D 91, H 93. cm

PACKAGE SIZE:
W 1075, D 975, H 1115 cm

WEIGHT: 44 Kg

PACKAGE WEIGHT: 80 Kg

RRP excl. VAT and shipping
ESTIMATED DELIVERY TIME: 9 weeks



AVAILABLE COLORS STRUCTURE

Fiberglass structure.

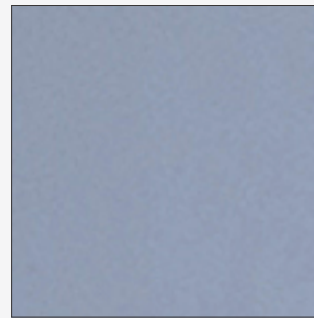


The **colors of Draga&Aurel** are completely unique. We encourage you to choose the reference color for your final product from the samples shown here for illustrative purposes. The reproduction of these samples includes a certain margin of tolerance.

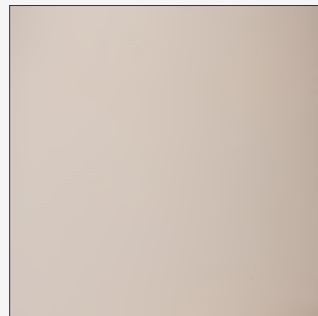
Draga&Aurel products may sometimes have small "imperfections," due to the craftsmanship process. It is important to us that our customers consider such "imperfections" as an aesthetic value and as a guarantee of craftsmanship.



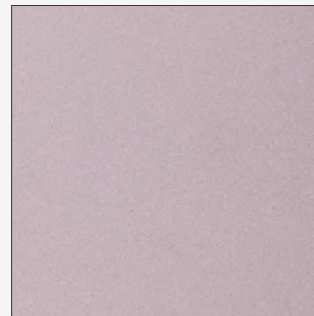
S01 / CANARY YELLOW



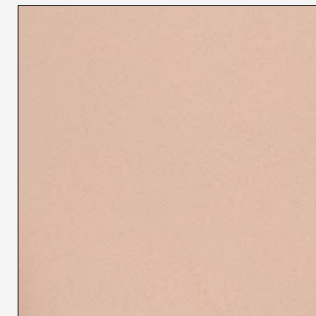
S02 / LIGHT VIOLET



S03 / NATURAL COTTON



S04 / LIGHT PINK



S05 / ROSE PETAL

AVAILABLE COLORS TEXTILE

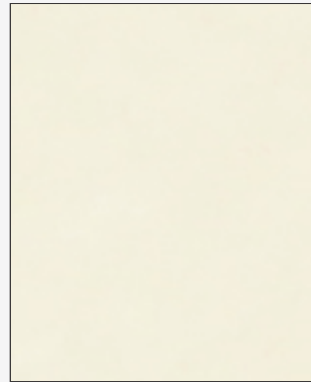
Backrest: Belfast, a short-pile cotton velvet.

Seat cushion: Alpaca, a velvet made from fine alpaca wool, long-pile.

* Both by Marzotto-interiors.com



T01 - BELFAST - 774868



T02 - ALPACA - 01

The **colors of Draga&Aurel** are completely unique.

We encourage you to choose the reference color for your final product from the samples shown here for illustrative purposes. The reproduction of these samples includes a certain margin of tolerance.

Draga&Aurel products

may sometimes have small "imperfections," due to the craftsmanship process. It is important to us that our customers consider such "imperfections" as an aesthetic value and as a guarantee of craftsmanship.

AVAILABLE COLORS FABRIC

Leather profile.



The **colors of Draga&Aurel** are completely unique. We encourage you to choose the reference color for your final product from the samples shown here for illustrative purposes. The reproduction of these samples includes a certain margin of tolerance.

Draga&Aurel products may sometimes have small "imperfections," due to the craftsmanship process. It is important to us that our customers consider such "imperfections" as an aesthetic value and as a guarantee of craftsmanship.



P01 - BLACK

COLOR VARIANTS

Fabrics C01 - C04

Backrest: Belfast, a short-pile cotton velvet.
Seat cushion: Alpaca, a velvet made from fine alpaca wool, long-pile.

Both by:
Marzotto-interiors.com
Marzotto-tessuti.com

Fabrics C05* - C12 *

Backrest: Belfast, a short-pile cotton velvet by Marzotto-interiors.
Seat cushion: Adamo & Eva, a cotton velvet by Dedar.com.

* Price on request.



C01



C02



C03



C04



C05



C06



C07



C08



C09



C10



C11



C12