

Couronne Cocktail Table



The Couronne Cocktail Table showcases a harmony of intersections. The form is inspired by the work of Art Deco master Maxime Olde. The base is mixed materials of gunmetal steel, brushed aluminum stretchers and a polished brass screw detail. The top is an elegant pattern of Coquille D'Oeuf (eggshell mosaic), grounded by the dark smooth resin trimmed in a satin brass frame.

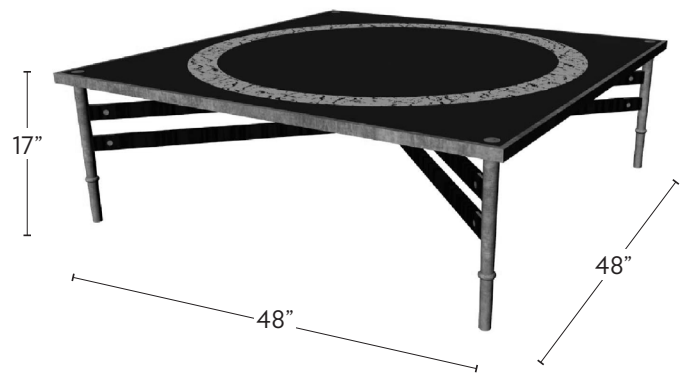
SPECIFICATIONS

48"W x 17"H x 48"D

MATERIALS + FINISH

MATERIALS: Eggshell, Antiqued Black Resin.

METAL: Satin Brass, Satin Nickel, Oil-Rubbed Bronze, Antique Bronze, Gunmetal.

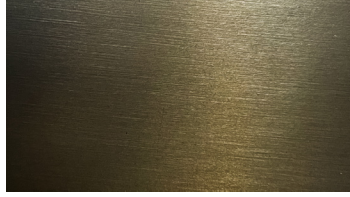


Materials

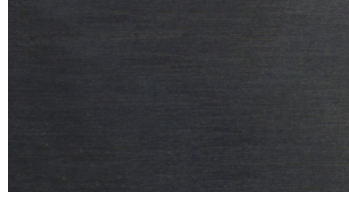
Metal (Frame)



Satin Brass



Oil Rubbed Bronze



Gunmetal

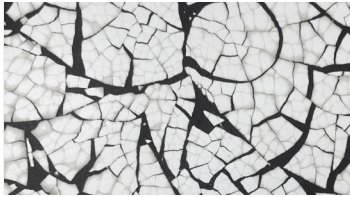


Antique Bronze



Satin Nickel

Eggshell (Details)



Black