

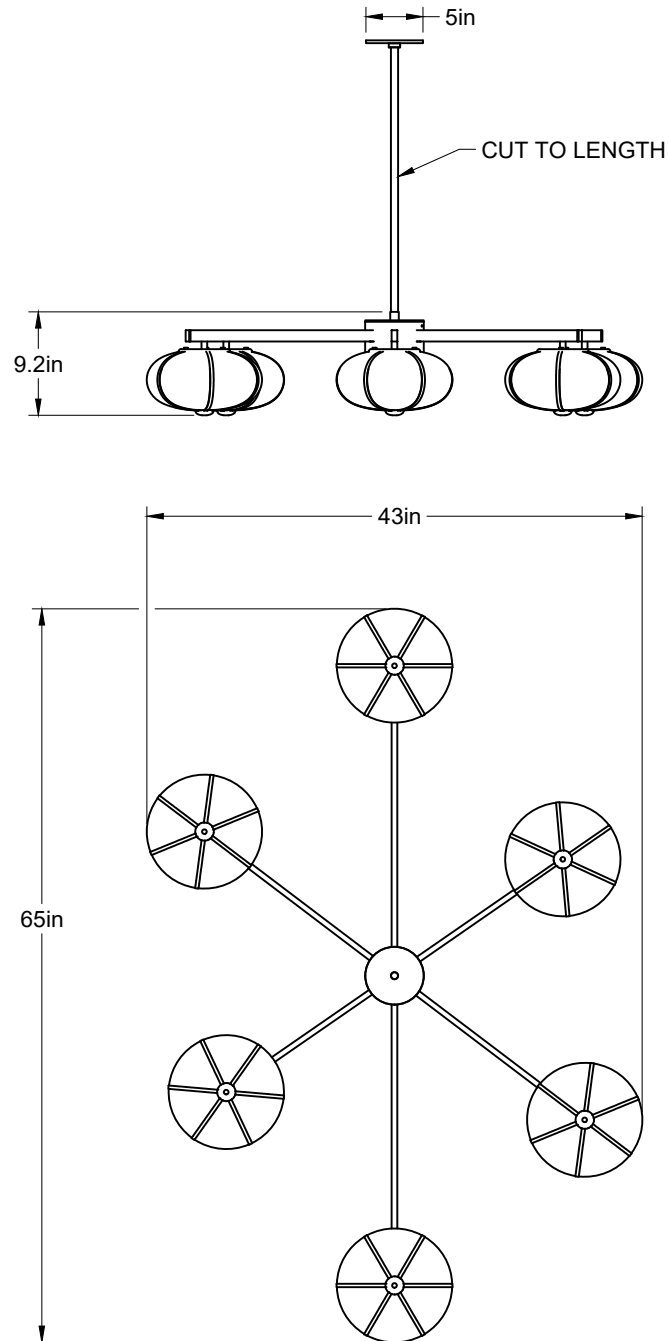
Rib Chandelier - 6 Suspension



The Rib Chandelier is anchored by a cylindrical core, hand-wrapped in leather or suede. Glass pendants, framed by slender brass ribs, extend outward to form a balanced constellation of texture, structure, and light. Available with 3 or 6 pendants, as either a suspended fixture or a flush mount.

The Rib Collection continues Konekt's exploration of opposing characteristics — finding contrast and balance between strength and fragility, soft curves and sharp lines, adornment and moderation.

Rib Chandelier - 6 Suspension



Dimensions

65"W x 43"L x 9"H

Overall drop length

Cut to order. Pricing includes up to 78"H. For longer drop lengths inquire for custom quote

Materials

Glass, brass and hand-wrapped leather or suede

Finishes

Satin brass, antique brass, polished brass, oil-rubbed bronze, satin black, satin nickel, antique nickel or polished nickel

Leather color options

Maroon, tan, cream, fumo, mocha, or dark olive

Suede color options

Walnut, beige, or pearl

Lead time

12-16 weeks

Lamping

E12 | 120V | 60W

7W dimmable LED bulb included

120V; 700 lumens; 2700k color temperature

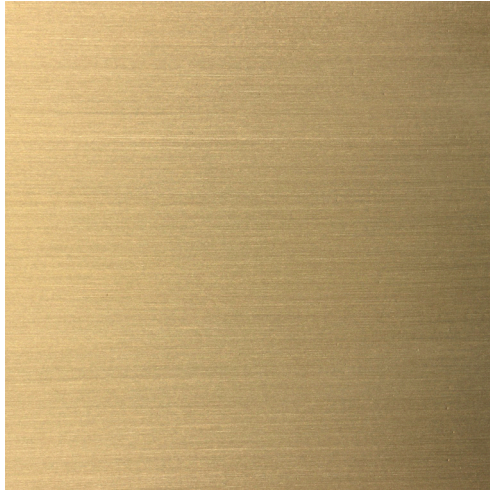
Weight

Approx. 33 lbs

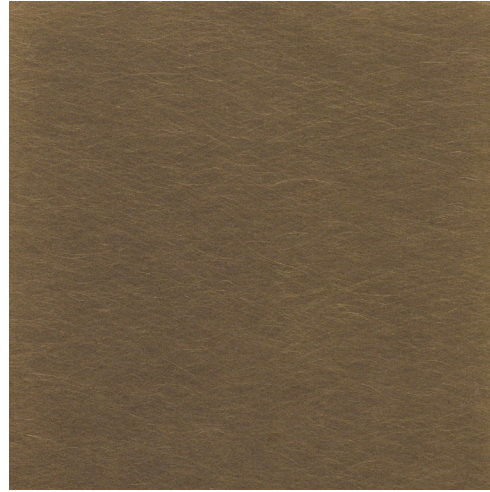
UL listed



Polished Brass



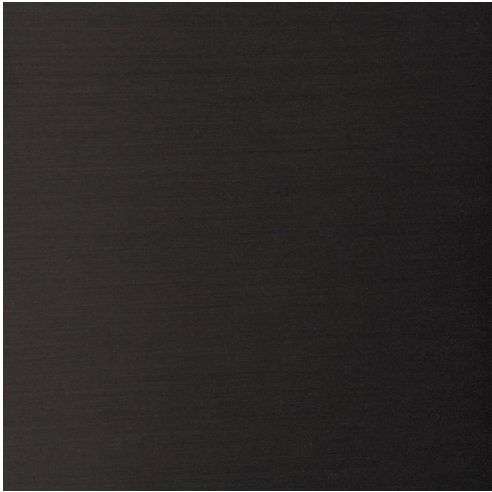
Satin Brass



Antique Brass



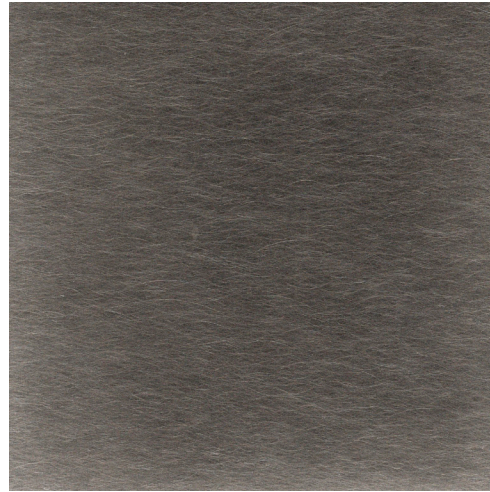
Oil-Rubbed Bronze



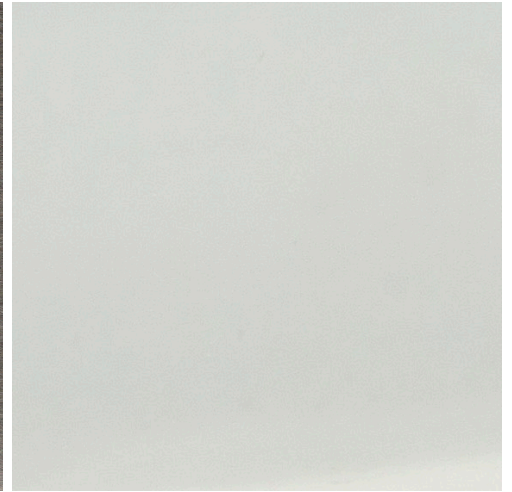
Satin Black



Satin Nickel



Antique Nickel



Polished Nickel



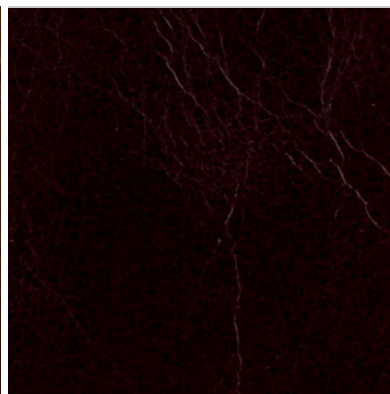
Beige Suede



Pearl Suede



Walnut Suede



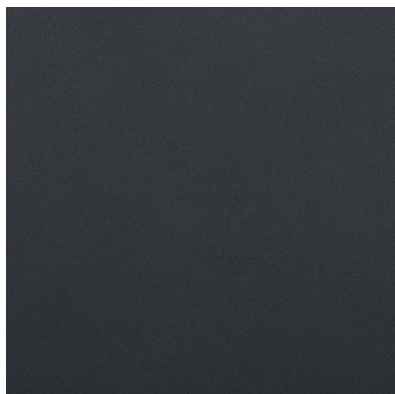
Maroon Leather (distressed)



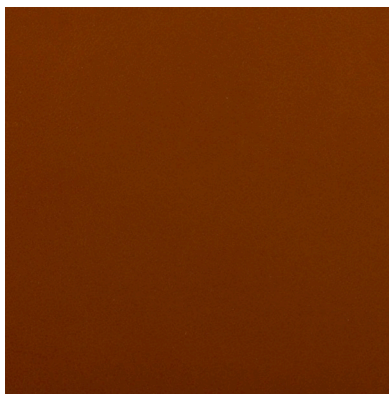
Mocha Leather



Dark Olive Leather



Fumo Leather



Tan Leather



Cream Leather