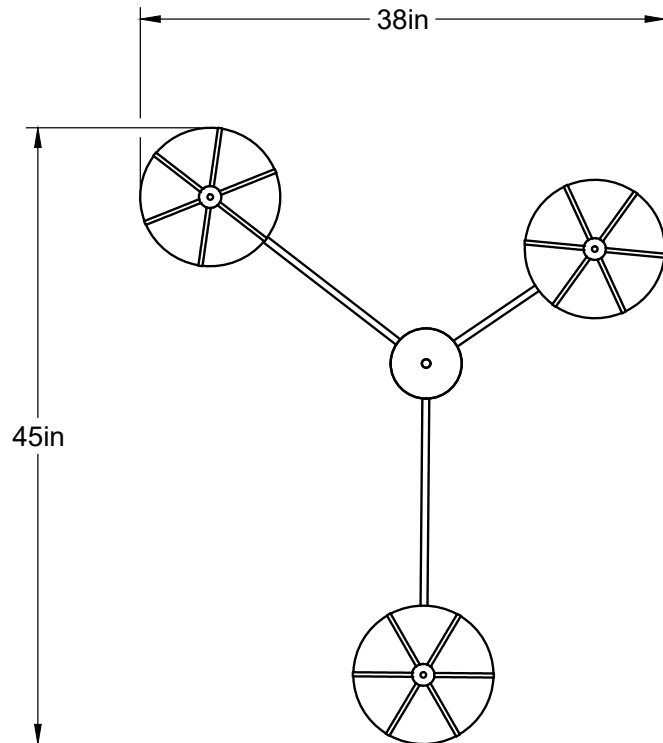
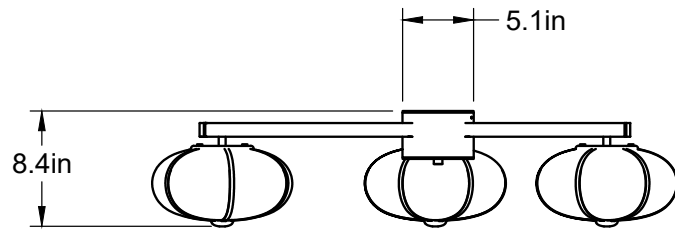




The Rib Chandelier is anchored by a cylindrical core, hand-wrapped in leather or suede. Glass pendants, framed by slender brass ribs, extend outward to form a balanced constellation of texture, structure, and light. Available with 3 or 6 pendants, as either a suspended fixture or a flush mount.

The Rib Collection continues Konekt's exploration of opposing characteristics — finding contrast and balance between strength and fragility, soft curves and sharp lines, adornment and moderation.

Rib Chandelier - 3 Flush Mount



Dimensions

45"W x 38"L x 8 ½"H

Materials

Glass, brass and hand-wrapped leather or suede

Finishes

Satin brass, antique brass, polished brass, oil-rubbed bronze, satin black, satin nickel, antique nickel or polished nickel

Leather color options

Maroon, tan, cream, fumo, mocha, or dark olive

Suede color options

Walnut, beige, or pearl

Lead time

10-14 weeks

Lamping

E12 | 120V | 60W

7W dimmable LED bulb included

120V; 700 lumens; 2700k color temperature

Weight

Approx. 19 lbs

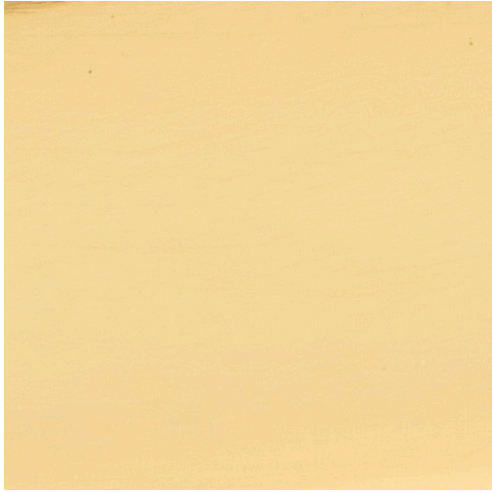
UL listed

info@konektstudio.com

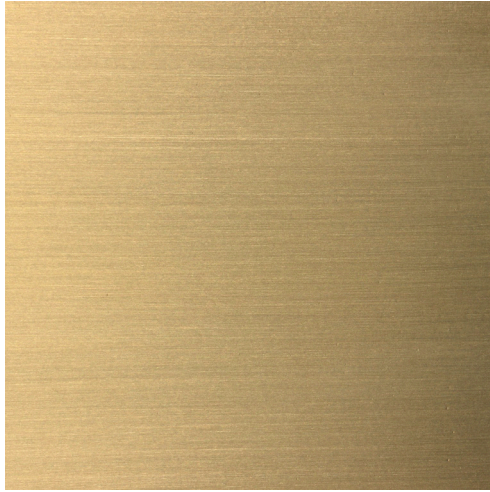
+1 (917) 261-6470

@konektstudio.com

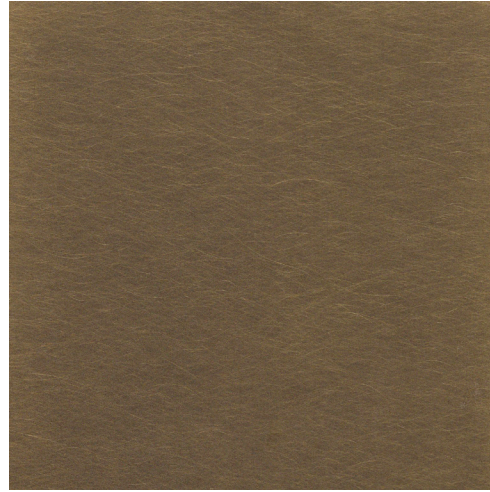
konekt



Polished Brass



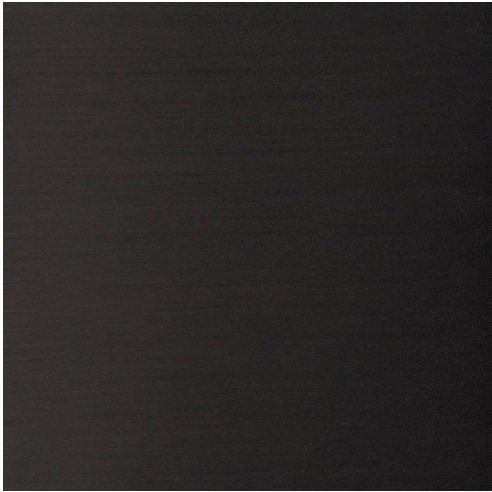
Satin Brass



Antique Brass



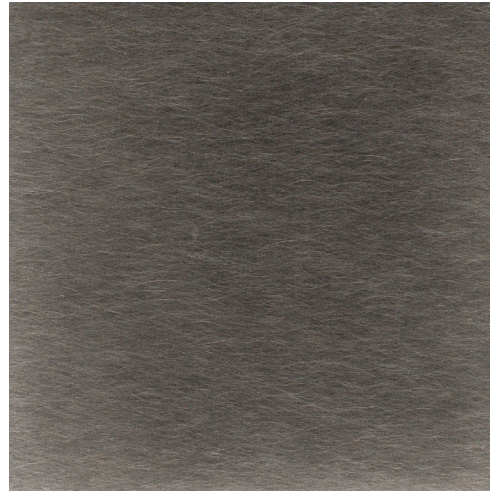
Oil-Rubbed Bronze



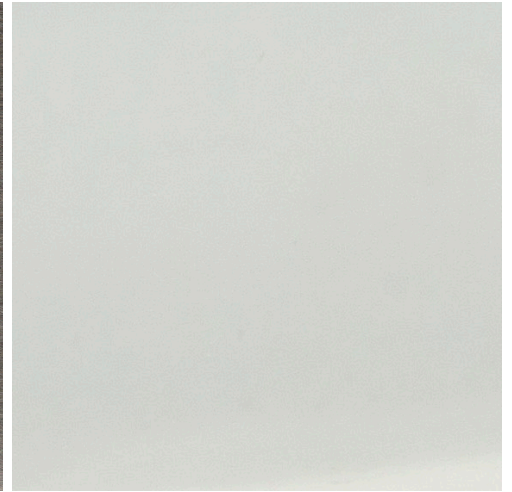
Satin Black



Satin Nickel



Antique Nickel



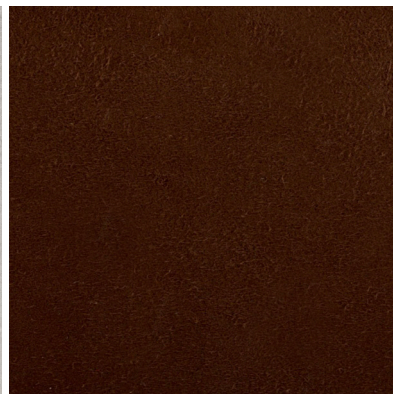
Polished Nickel



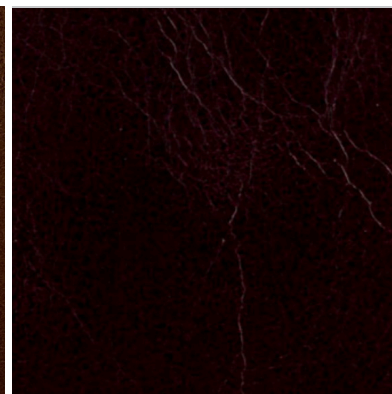
Beige Suede



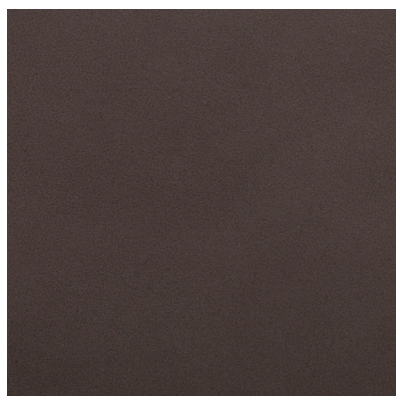
Pearl Suede



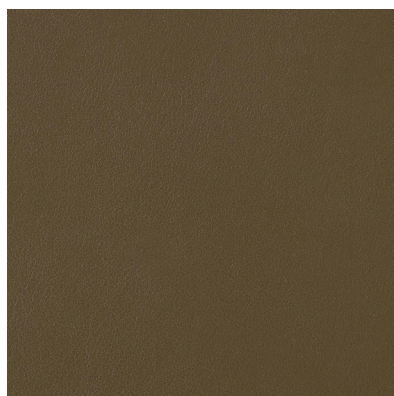
Walnut Suede



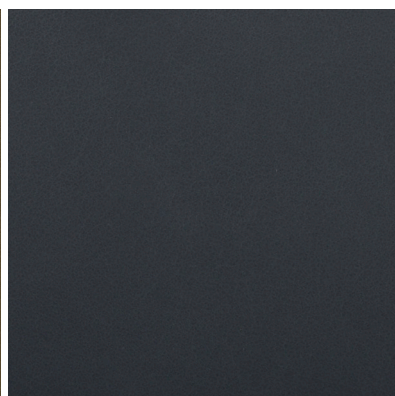
Maroon Leather (distressed)



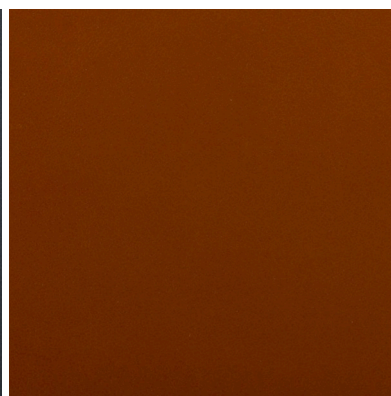
Mocha Leather



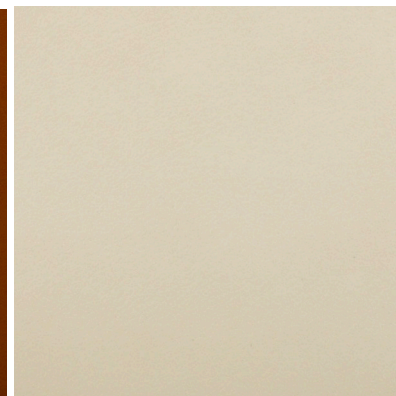
Dark Olive Leather



Fumo Leather



Tan Leather



Cream Leather